

*Jakarta, March 12<sup>th</sup>, 2014*

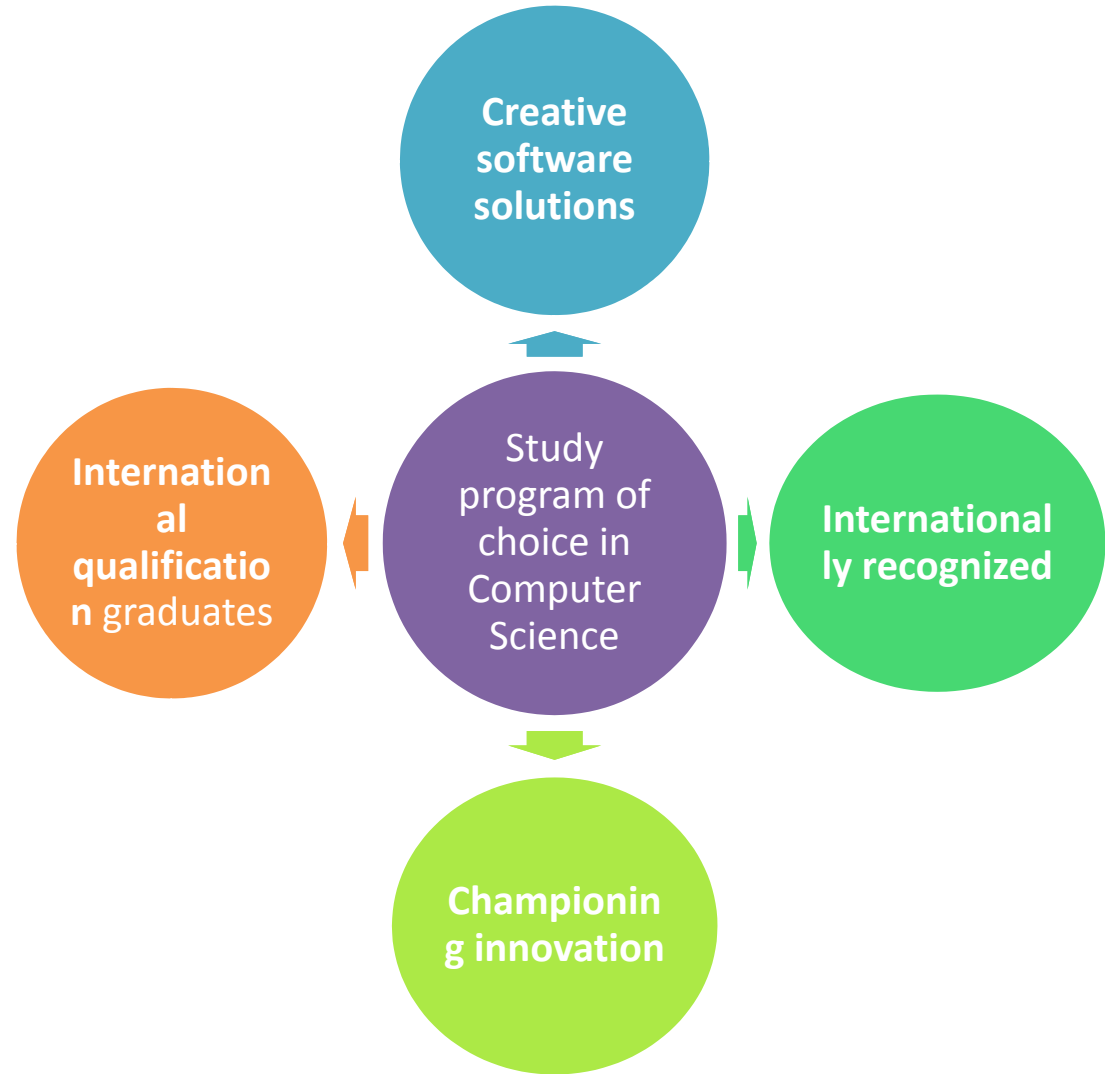
## **CONCENTRATION @CS**

### *Competencies, Subjects and Conditions*

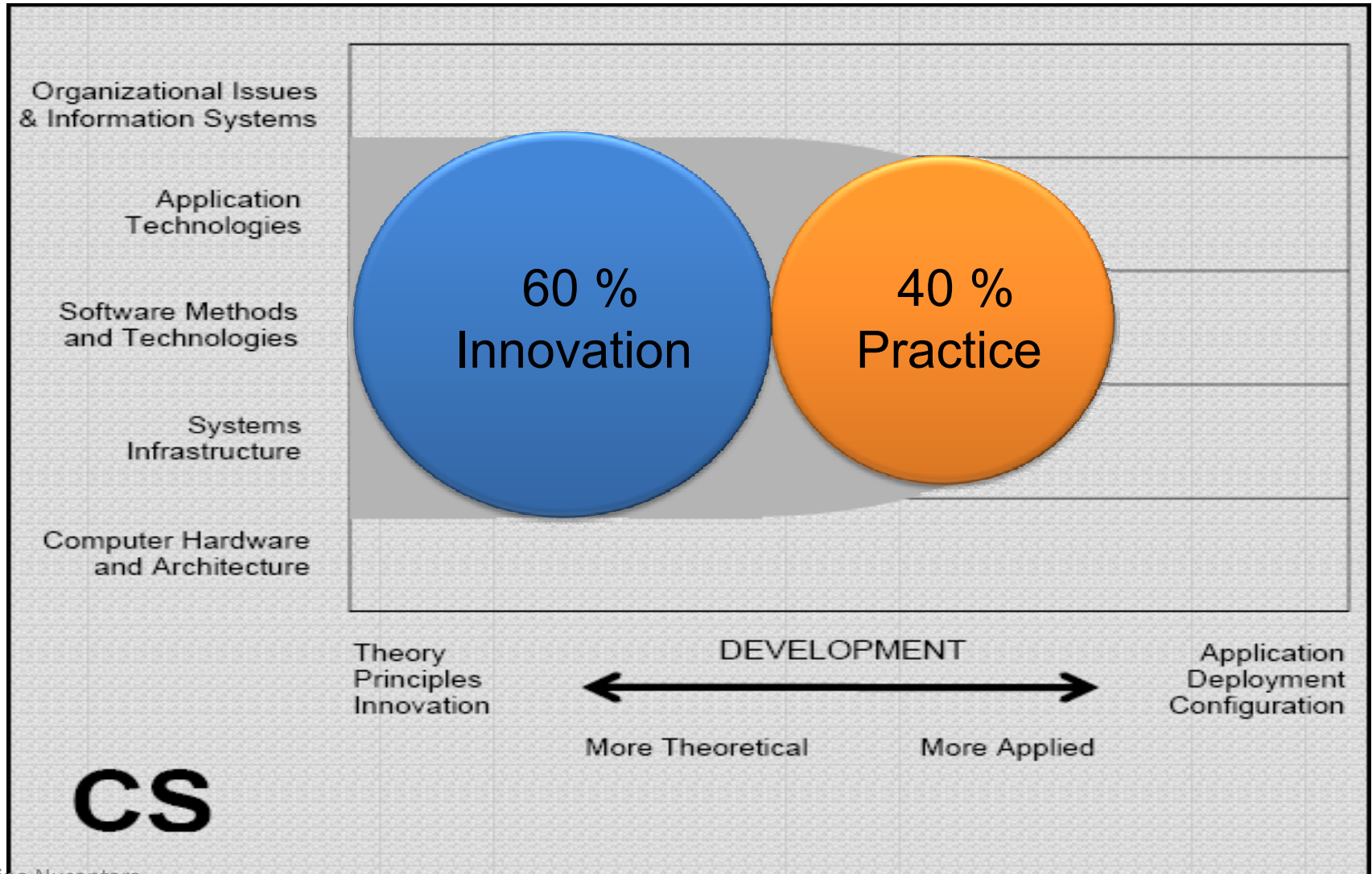
*To concentrate and shape your  
competencies to face the Global  
Employability*

Computer Science Program

# VISION



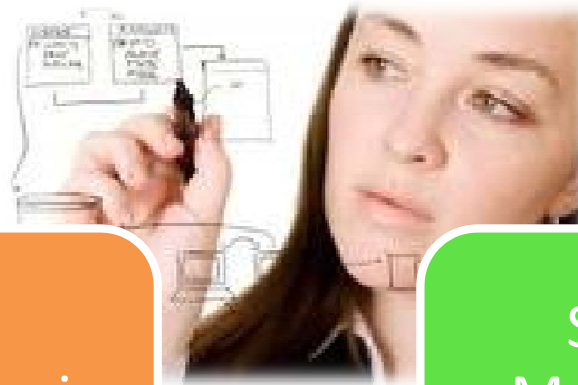
# COMPUTER SCIENCE (ACM CURRICULA 2005)



# COMPUTER SCIENCE

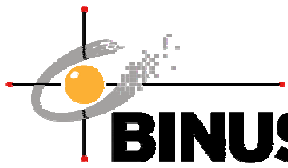
**SINCE  
1987**

Application  
Technology



Systems  
Infrastructure in  
ICT development

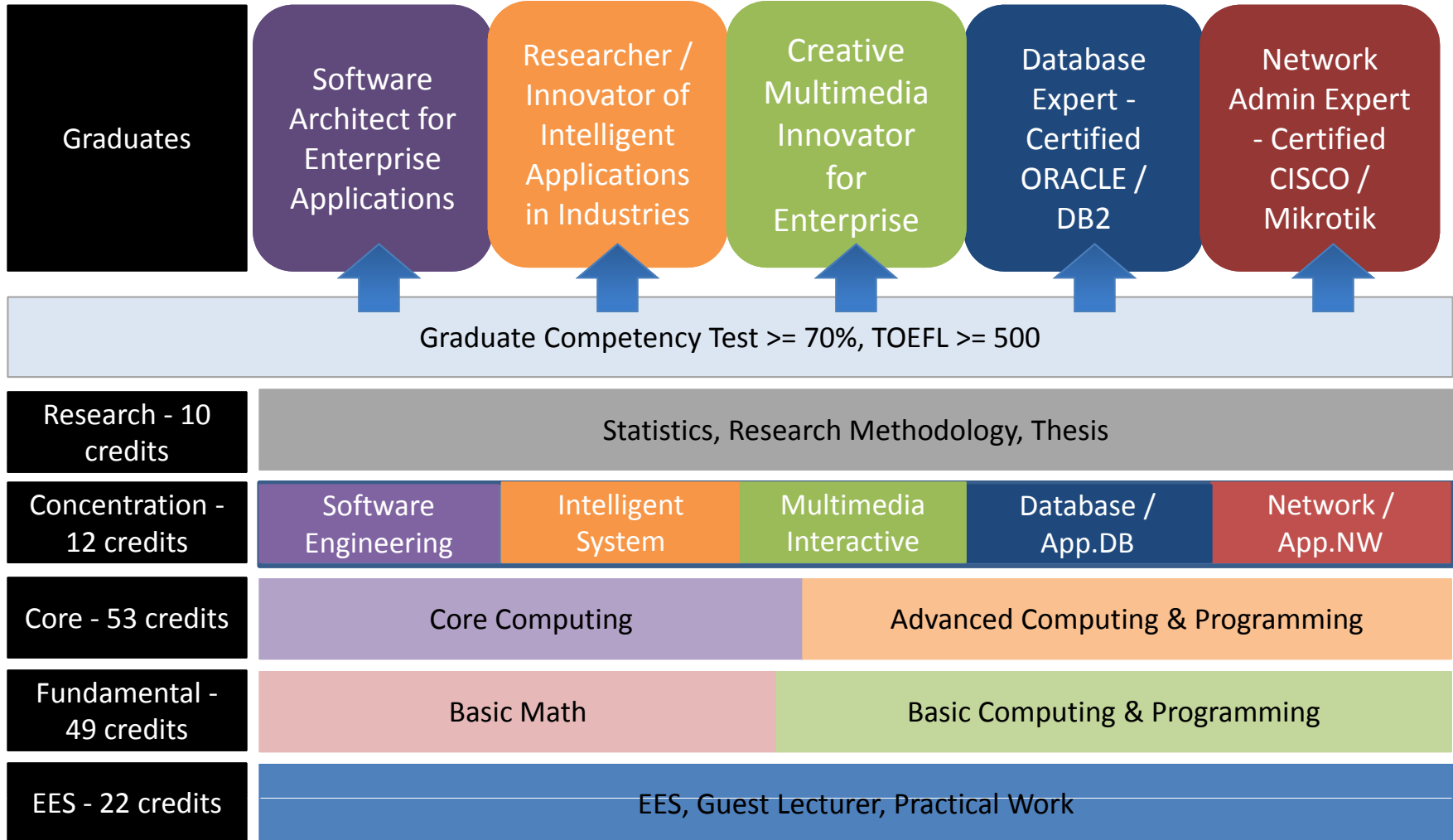
Software  
Methods and  
Technology



**BINUS UNIVERSITY**

**SCHOOL OF COMPUTER SCIENCE**

# CURRICULUM STRUCTURE



# SOFTWARE ENGINEERING

*Software Engineering  
(T1414)*

*Explore the  
various methodologies and  
tools for software  
development*

*Competencies :*

*To be able to engineer big scale  
software application using the correct  
and complete development methodology*



## SUBJECTS

- Object Oriented Software Engineering
- Software Project Management
- Advanced Topic in S/W Engineering
- Current Popular IT I (**.NET Technology**)

## THESIS Topics

- Web e-Application
- Mobile Application
- Web Technology

## Management

- Chief Technology Officer
- Chief Information Officer
- IT Consultant

## System Development

- Project Manager
- Systems Analyst
- Systems Administrator
- Systems Programmer
- Applications Programmer

## Web Specialist

- Web Designer
- Web Programmer
- Web Administrator

## Scientist

- Lecturer / Trainer
- Researcher

back



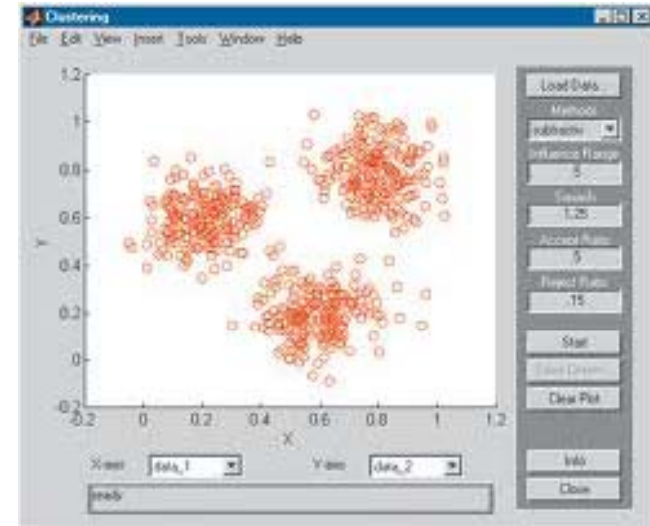
# INTELLIGENT SYSTEM

*Artificial  
Intelligence  
(T0264)*

*Explore various  
techniques of computer  
intelligence that can be  
applied to solve  
a problem*

*Competencies :*

*To be able to apply intelligence  
technique in varied application*



# INTELLIGENCE SYSTEM

## SUBJECTS

- Expert Systems
- Neuro Computing
- Computer Vision
- Current Popular IT III  
(Fuzzy Logic)

## THESIS Topics

- Expert Systems based Application
- Neural Network based Application
- Computer Vision based Application
- Natural Language based Application

# INTELLIGENCE SYSTEM

## Management

- Chief Technology Officer
- Chief Information Officer
- IT Consultant

## Intelligence System Development

- Intelligence System Developer

## Scientist

- Lecturer / Trainer
- Researcher

back

*Multimedia System  
(T0553)*

*Explore the  
various methodologies and  
tools of multimedia-  
based application  
development*

*Competencies :*

*To be able to engineer a multimedia  
based application*



## SUBJECTS

- Multimedia Programming Foundation (JAVA)
- Game Design and Programming (Java Monkey Engine)
- Multimedia 3D Modelling and Animation
- Current Popular IT V

## THESIS Topics

- Multimedia based Application
- Computer Aided Instructional
- Game

# INTERACTIVE MULTIMEDIA

## Management

- Chief Technology Officer
- Chief Information Officer
- IT Consultant

## Multi Media

- Multimedia Designer
- Multimedia Engineer
- Game Engineer
- Game Designer

## Scientist

- Lecturer / Trainer
- Researcher

back

# DATABASE TECHNOLOGY

*Data Base System  
(T0206)*

*Explore various technologies and development of database system(ORACLE)*

*Competencies :*

*To be able to design and manage a database correctly that required by organization*



## SUBJECTS

- Design Database
- Web Database
- Data Warehouse
- Current Popular IT II  
(DB2 Database Server)

## THESIS Topics

- Database Design
- Database Programming
- Data Warehouse  
Application
- Geographic  
Information System



# APPLIED DATABASE

*Algorithm &  
Programming (T0016) –  
Grade A*  
*Database System (T0206)  
– Grade A*

*Explore various  
technologies and  
development of database  
system(ORACLE)*

*Competencies :*

*Ready to be certified as OCA (ORACLE  
Certified Administrator) and OCP  
(ORACLE Certified Professional)*



# APPLIED DATABASE

## SUBJECTS

- Applied Database I
- Applied Database II
- Applied Database III

## THESIS Topics

- Database Design
- Database Programming
- Data Warehouse Application
- Geographic Information System

# APPLIED DATABASE PRE-REQUISITE

## Majors

- CS or IS

## Conditions :

- TOEFL  $\geq$  500
- IPK  $\geq$  3,25 (IPK semester 3)
- Capacity : 2 classes @ 30 students
- If the capacity cannot hold the number of students who choose Applied Database, students will be ranked by the score of pre-requisite subjects
- If you meet the pre-requisite, however you're score for pre-requisite subjects are out of rank, then you can choose another concentration

# DATABASE TECHNOLOGY & APPLIED DATABASE

## Management

- Chief Technology Officer
- Chief Information Officer
- IT Consultant

## Database Specialist

- Database Designer
- Database Programmer
- Database Administrator

## Scientist

- Lecturer / Trainer
- Researcher

back

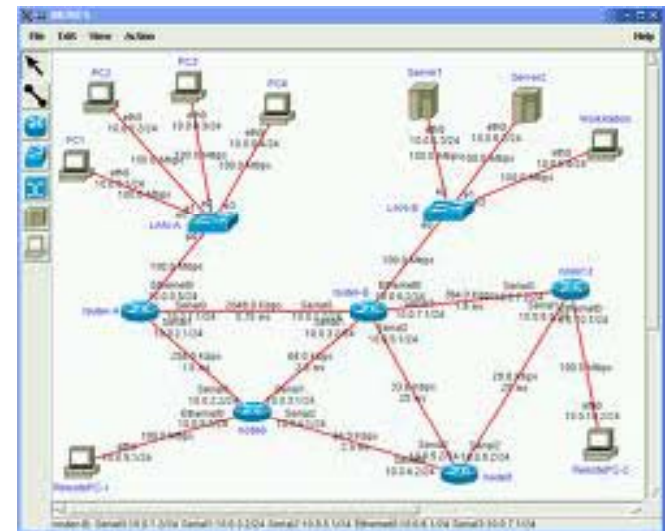
# NETWORKING

*Computer  
Network (H0515)  
– Grade B*

*Explore the field of  
computer networks  
include installation,  
administration and  
management*

*Competencies :*

*To be able to design, implement and  
manage a computer network correctly  
that required by organization*



# NETWORKING

## SUBJECTS

- Network Management
- Network Security
- Network Programming
- Current Popular IT IV  
(Network Admin w/  
Windows/Linux)

## THESIS Topics

- Network Programming
- Socket Programming
- Network based  
Application

# APPLIED NETWORKING

*Algorithm &  
Programming (T0016) –  
Grade A*

*Computer Network  
(H0515) – Grade A*

*Explore network  
technology which based  
on CISCO technology  
and equipment*

*Competencies :*

*Have skill and knowledge on how to  
manage a CISCO based computer  
network*



## SUBJECTS

- Applied Networking I
- Applied Networking II
- Applied Networking III

## THESIS Topics

- Network Programming
- Socket Programming
- Network based Application



# APPLIED NETWORKING PRE-REQUISITE

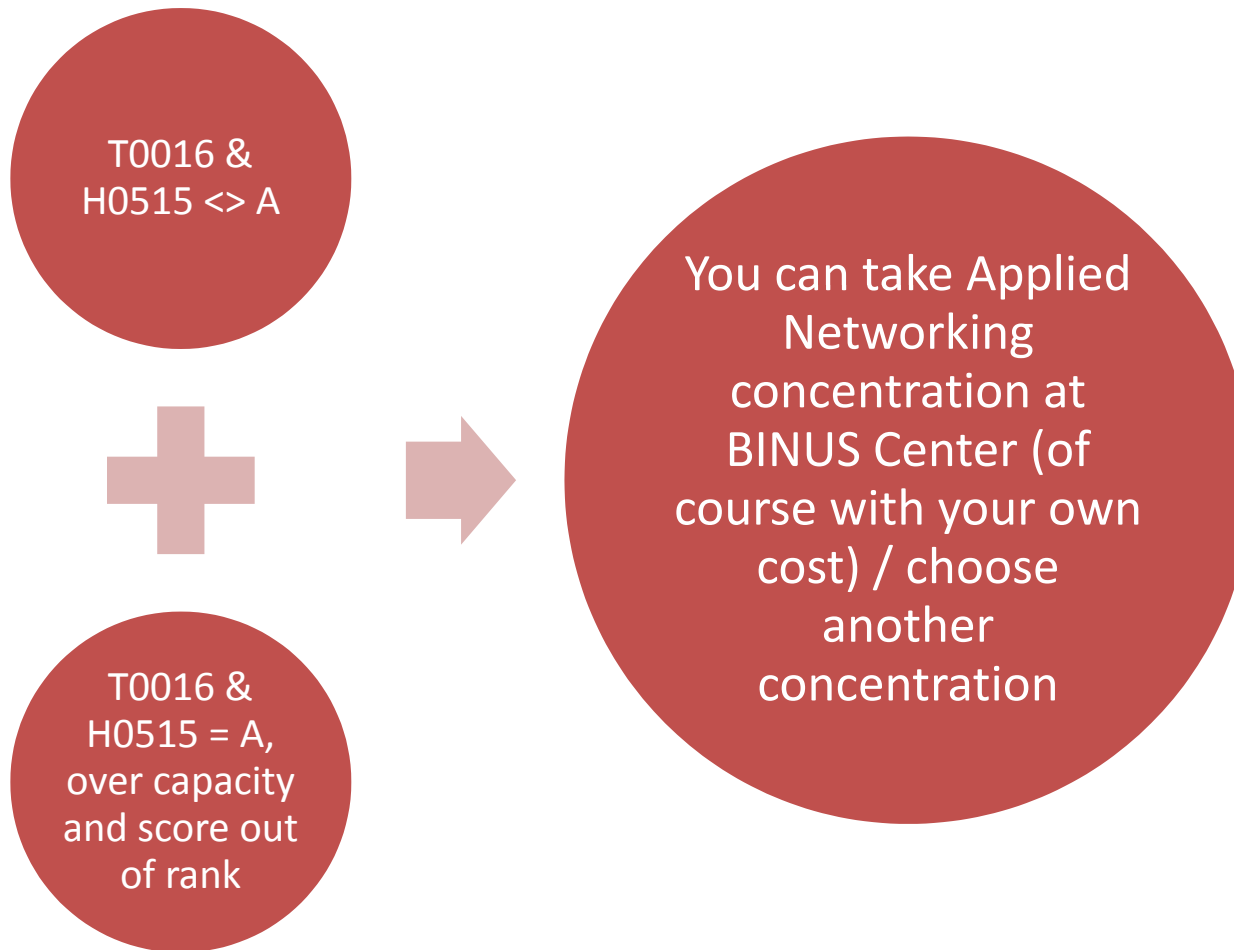
## Majors

- CS or CE

## Conditions :

- TOEFL  $\geq$  500
- IPK  $\geq$  3,25 (IPK semester 3)
- Capacity : 2 classes @ 24 students
- If the capacity cannot hold the number of students who choose Applied Networking, students will be ranked by the score of pre-requisite subjects
- If you meet the pre-requisite, however you're score for pre-requisite subjects are out of rank, then you can choose another concentration

# APPLIED NETWORKING



# NETWORKING & APPLIED NETWORKING

## Management

- Chief Technology Officer
- Chief Information Officer
- IT Consultant

## Network Specialist

- Networks Designer
- Networks Administrator

## Network Specialist (CISCO)

- Networks Designer
- Networks Administrator

## Scientist

- Lecturer / Trainer
- Researcher

back

# SKS FEE FOR APPLIED DB & APPLIED NW

Subjects	Execution SKS	Acknowledged SKS
Applied DB/NT - 1	0/8	0/4
Applied DB/NT - 2	0/8	0/4
Applied DB/NT - 3	0/8	0/4
<b>Total</b>	<b>24</b>	<b>12</b>

Special SKS fee will be applied and charged based on the number of Execution SKS



Special SKS Fee = Normal SKS fee + Additional Cost



Only those 3 subjects will be charged with special SKS Fee

## Unlimited Number of Class Concentration

- Software Engineering @ 70 students / class
- Database Technology @ 70 students / class
- Intelligence System @ 70 students / class
- Interactive Multimedia @ 70 students / class

## Limited Number of Class Concentration

- Networking 6 classes @ 70 students / class
- Applied Networking 2 classes @ 24 students / class
- Applied Database 2 classes @ 30 students / class

# CLASS CAPACITY

Program	Capacity	Notes
Regular - Kemanggisan	Mins 30 students / class	-
Regular - Alam Sutera	Mins 30 students / class	If the number of students choosing the concentration is less than minimal capacity <b>Option 1</b> : choose other concentration <b>Option 2</b> : join the concentration in the Kemanggisan Campus or will be arranged by HoP
Smart - Kemanggisan & Alam Sutera	Mins 10 students / class	

- You will choose 2 concentrations as your concentration priorities. Choose wisely, since it will determine your future.
- Students that are not accepted in their first priority, will be considered to be accepted in their second priority, but still considering the capacity of the class and pre-requisite subject grade (if any)
- Students who decide not to choose any concentrations, then their concentration will be determined by HoP by considering the pre-requisite subject grades and class capacity
- If there are any other things have not been mentioned above, the concentration of the student will be determined by HoP

# CONCENTRATION SELECTION PROCEDURE

Selection

Priority Option  
+ Pre-Requisite  
Subject Score  
(if any)



# CONCENTRATION BASED SEMINARS KEMANGGISAN CAMPUS

Concentration	Speaker	Dates	Location
Software Engineering	Aditya Kurniawan, S.Kom, MMSI	Thursday, 20 March 2014 11:20 – 13:00	Exhibition Hall Lt 3 Kampus Anggrek
Intelligence Systems	Derwin Suhartono, S.Kom, MTI	Wednesday, 19 March 2014 09:20 – 11:00	L1B Kampus Syahdan
Database / Applied Database	Edy Irwansyah, ST., M.Si.	Thursday, 20 March 2014 13:20 – 15:00	Exhibition Hall Lt 3 Kampus Anggrek
Networking / Applied Network	Bayu Kanigoro, S.Kom, M.T	Thursday, 20 March 2014 09:20 – 11:00	Exhibition Hall Lt 3 Kampus Anggrek
Interactive Multimedia	Rhio Sutoyo, S.Kom, M.Sc.	Wednesday, 19 March 2014 15:20 – 17:00	Exhibition Hall Lt 3 Kampus Anggrek

# CONCENTRATION BASED SEMINARS ALAM SUTERA CAMPUS

Seminar	Speaker	Dates	Location
Interactive Multimedia	Rhio Sutoyo, S.Kom, M.Sc.	Tuesday, 18 March 2014 15:20 – 17:00	ASB 13
Networking / Applied Network	Bayu Kanigoro, S.Kom, M.T	Monday, 17 March 2014 13:20 – 15:00	ASB 6
Database / Applied Database	Zulfany E. Rasjid, BSc, MMSI	Monday, 17 March 2014 13:20 – 15:00	ASB 6
Intelligence Systems	Derwin Suhartono, S.Kom, MTI	Tuesday, 18 March 2014 11:20 – 13:00	ASB 13
Software Engineering	Aditya Kurniawan, S.Kom, MMSI	Monday, 17 March 2014 09:20 – 11:00	ASB 7

Please go to School of Computer Science web

<http://socs.binus.ac.id>

For more information, article and journal  
regarding concentration



# THANK YOU

*Building future for our next  
generation*

Computer Science Program