

Network stream

Bayu kanigoro, S.kom., m.t

Ccc network, computer science program

School of computer science

introduction

- Network stream is a focus on the development of computer networks in business entities, administer, manage and develop applications that utilize computer networks.
- In addition, students also gain expertise in administering and managing systems based on Windows and Linux operating systems.
- This specialization also demands student independence in conducting self-exploration to develop their skills so that they are ready to face challenges in the workplace and industry.

Subjects

Network Design

Network
Programming

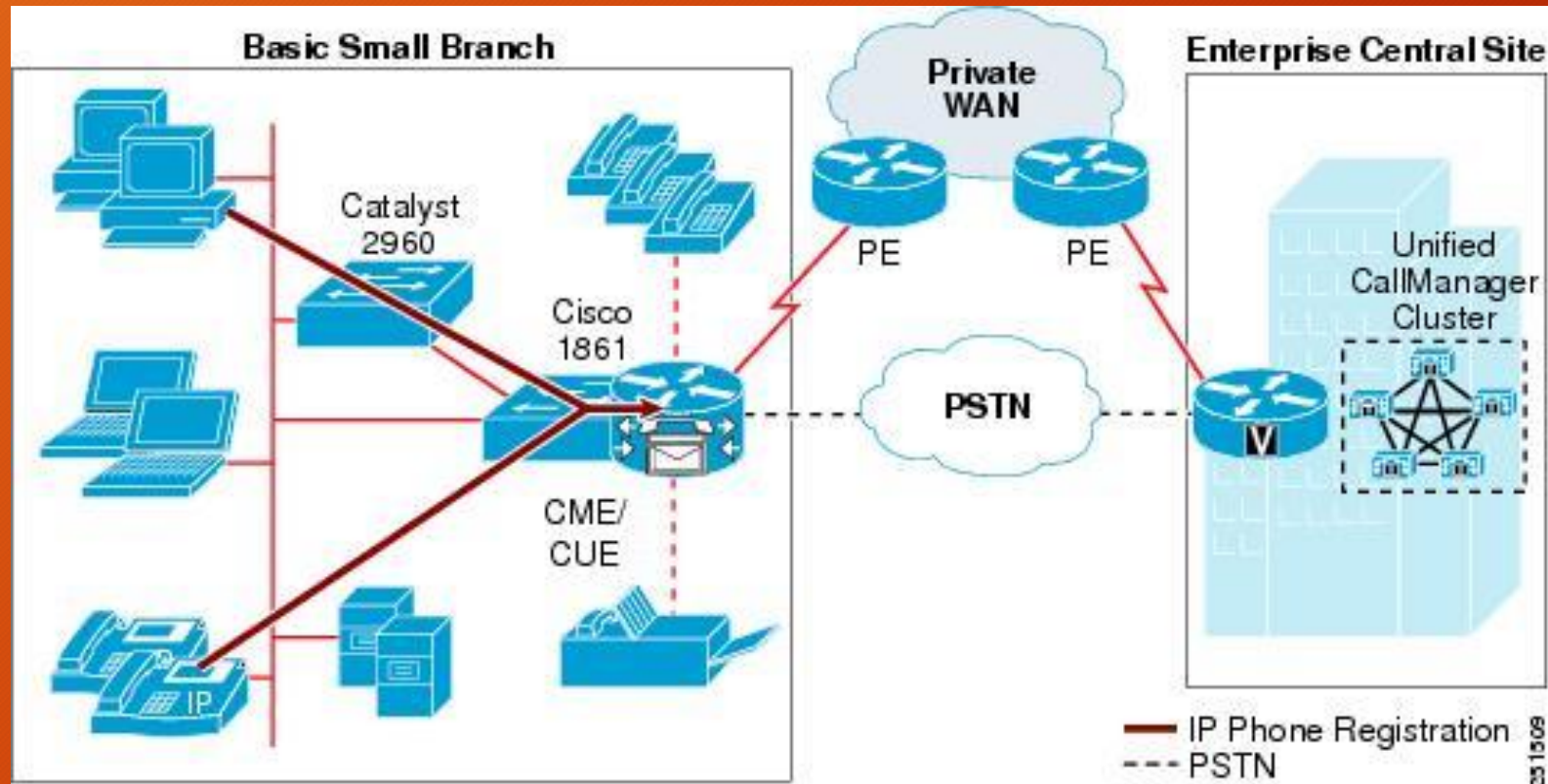
Server
Technology

Linux Operating
System

Current Popular
Network
Technology

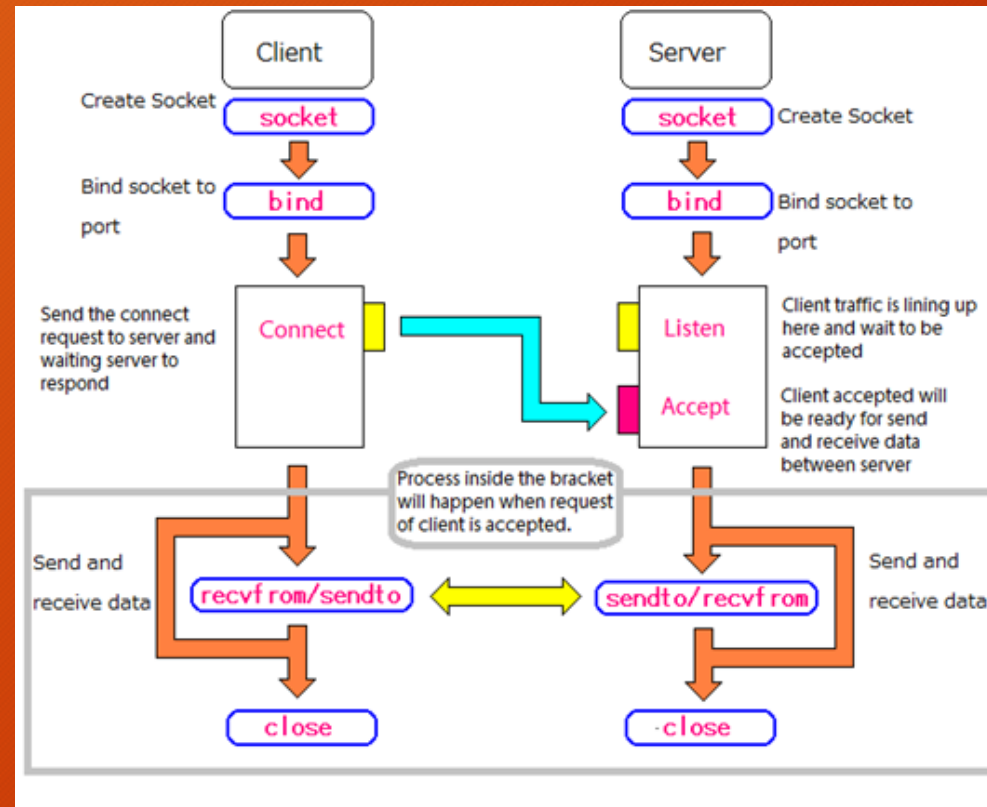
Network design

- This course will give you some knowledge to design a network topology and addressing.



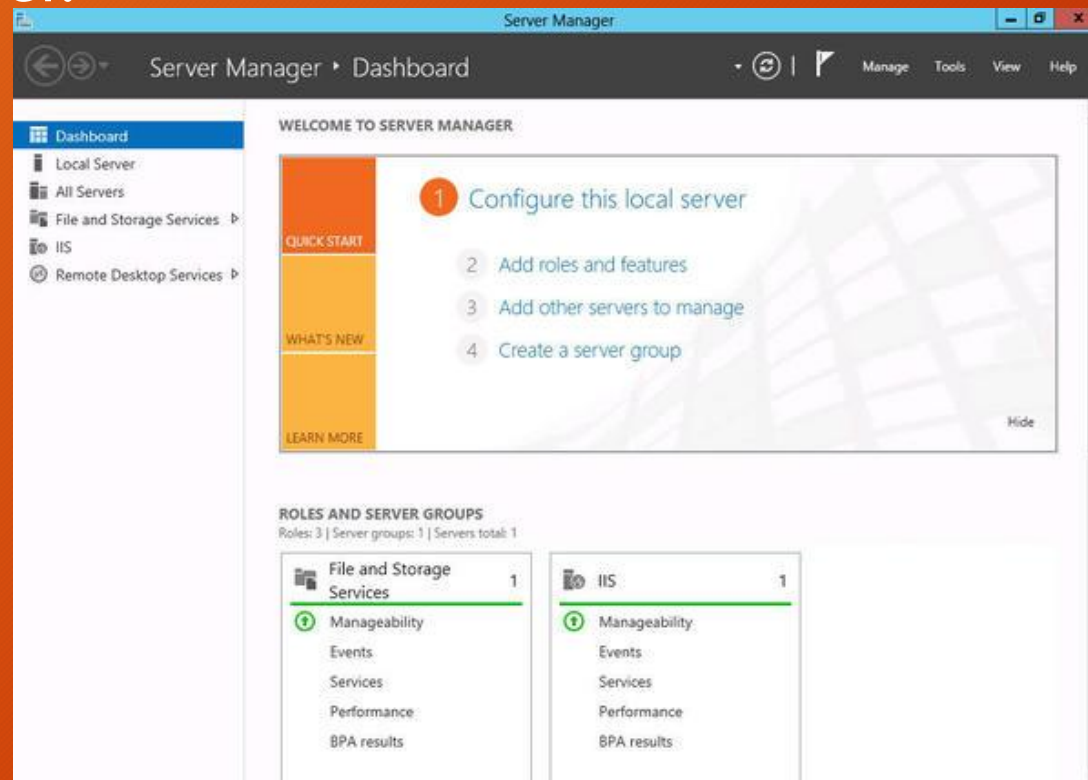
Network programming

This course will give you some knowledge to develop client-server application using network API.



Server technology

This course will give you some knowledge and skill on how to manage Windows Server.



Linux Operating System

This course will give you some knowledge and skill on how to manage Linux based Server.

Linux Administrator



What my friends think I do.



What my mom thinks I do



What my family thinks I do.



What my boss thinks I do.



What I think I do.



What I actually do.

Perception vs Fact .com

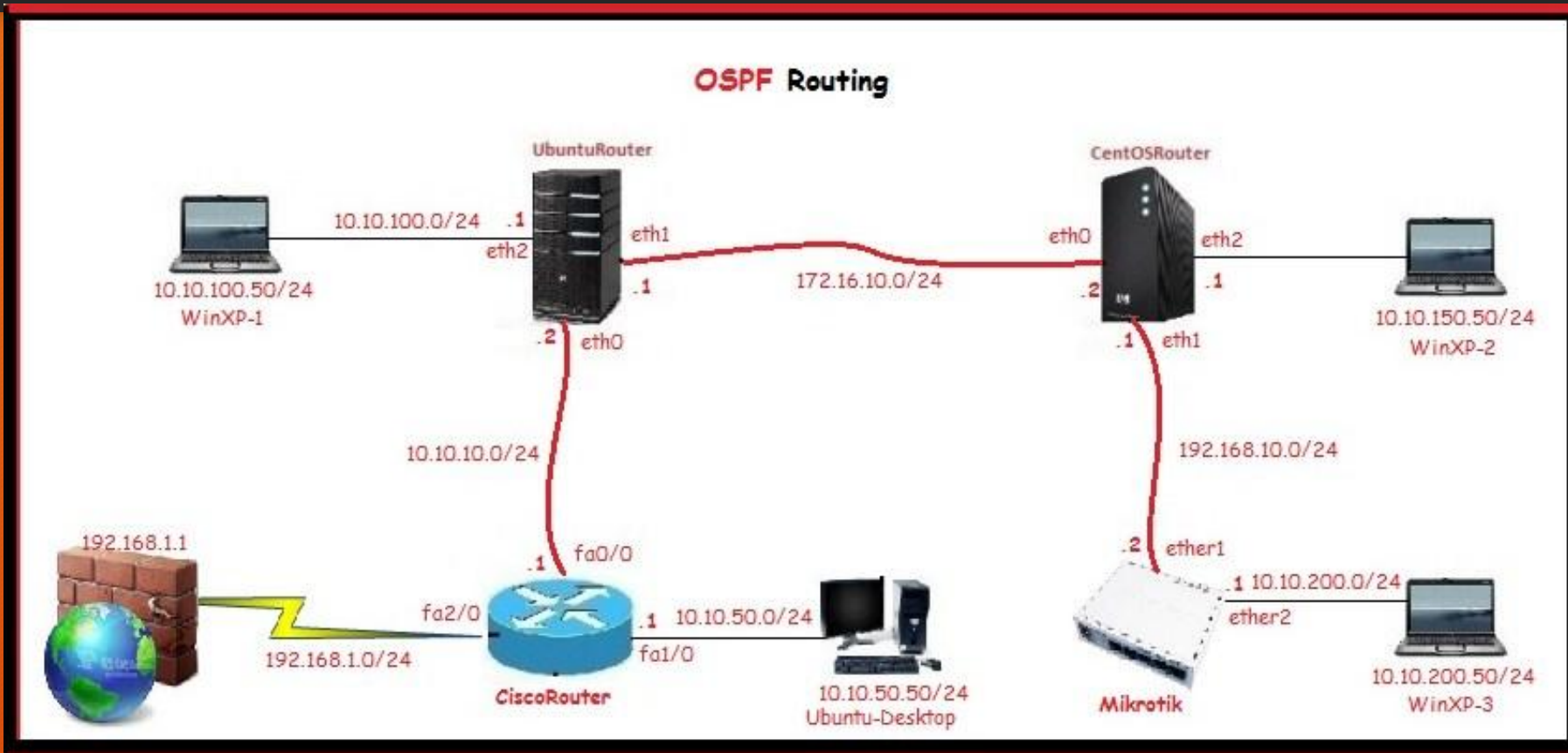
```
dave@mylinuxmachine: ~
CPU [|||||] 11.3% Tasks: 110, 155 thr; 2 running
Mem [|||||] 408/2002MB Load average: 0.19 0.12 0.07
Swp [|||||] 0/2045MB Uptime: 00:18:36
```

PID	USER	PRI	NI	VIRT	RES	SHR	S	CPUX	MEM%	TIME+	Command
1921	dave	20	0	1183M	135M	36432	S	6.6	6.8	0:21.35	comptz
915	root	20	0	264M	53020	12804	S	2.6	2.6	0:10.63	/usr/bin/X -core :0 -auth /var/run/lightdm/root/:
2241	dave	20	0	30572	2356	1416	R	2.6	0.1	0:08.81	htop
1860	dave	20	0	405M	11236	8156	S	0.7	0.5	0:00.07	/usr/bin/gnome-screensaver --no-daemon
1653	dave	20	0	109M	1448	892	S	0.7	0.1	0:01.38	/usr/bin/VBoxClient --draganddrop
1651	dave	20	0	109M	1448	892	S	0.7	0.1	0:01.38	/usr/bin/VBoxClient --draganddrop
2116	dave	20	0	572M	19580	13028	S	0.0	1.0	0:01.70	gnome-terminal
389	messagebu	20	0	31524	2316	972	S	0.0	0.1	0:00.44	dbus-daemon --system --fork
1826	dave	20	0	620M	4556	3548	S	0.0	0.2	0:00.03	/usr/lib/x86_64-linux-gnu/indicator-session/indic
1366	rtkit	21	1	164M	1300	1072	S	0.0	0.1	0:00.02	/usr/lib/rtkit/rtkit-daemon
921	root	20	0	211M	1072	740	S	0.0	0.1	0:00.39	/usr/sbin/VBoxService
1713	dave	20	0	650M	17936	11776	S	0.0	0.9	0:00.26	/usr/lib/gnome-settings-daemon/gnome-settings-dae
928	root	20	0	211M	1072	740	S	0.0	0.1	0:00.12	/usr/sbin/VBoxService
840	whoopsie	20	0	364M	5304	3892	S	0.0	0.3	0:00.07	whoopsie
2230	dave	20	0	511M	4808	3840	S	0.0	0.2	0:00.07	/usr/lib/x86_64-linux-gnu/deja-dup/deja-dup-monit
818	root	20	0	267M	6520	5024	S	0.0	0.3	0:00.03	NetworkManager
924	root	20	0	211M	1072	740	S	0.0	0.1	0:00.20	/usr/sbin/VBoxService
1736	dave	20	0	565M	17136	11596	S	0.0	0.8	0:00.06	/usr/lib/unity/unity-panel-service
2103	dave	20	0	381M	7464	5800	S	0.0	0.4	0:00.01	zeitgeist-databus
440	syslog	20	0	241M	1368	1080	S	0.0	0.1	0:00.11	rsyslogd -c5
1372	rtkit	20	0	164M	1300	1072	S	0.0	0.1	0:00.01	/usr/lib/rtkit/rtkit-daemon
1043	root	20	0	286M	4704	3716	S	0.0	0.2	0:00.05	/usr/lib/accountsservice/accounts-daemon
1825	dave	20	0	602M	8104	6132	S	0.0	0.4	0:00.06	/usr/lib/x86_64-linux-gnu/indicator-datetime-serv
1041	root	20	0	286M	4704	3716	S	0.0	0.2	0:00.13	/usr/lib/accountsservice/accounts-daemon
1723	dave	20	0	565M	17136	11596	S	0.0	0.8	0:00.28	/usr/lib/unity/unity-panel-service
1939	dave	20	0	1183M	135M	36432	S	0.0	6.8	0:00.07	comptz
2088	dave	20	0	346M	5180	4136	S	0.0	0.3	0:00.03	/usr/bin/zeitgeist-daemon
1766	dave	20	0	650M	17936	11776	S	0.0	0.9	0:00.01	/usr/lib/gnome-settings-daemon/gnome-settings-dae
1968	dave	20	0	585M	17776	12520	S	0.0	0.9	0:00.14	nm-applet
2068	dave	20	0	325M	12568	9536	S	0.0	0.6	0:00.10	/usr/bin/gtk-window-decorator
783	root	20	0	267M	6520	5024	S	0.0	0.3	0:00.11	NetworkManager

F1 Help F2 Setup F3 Search F4 Filter F5 Tree F6 Sort By F7 Nice F8 Nice F9 Kill F10 Quit

Current Popular Network Technology

This course will give you some knowledge and skill on how to manage computer network and Mikrotik devices.



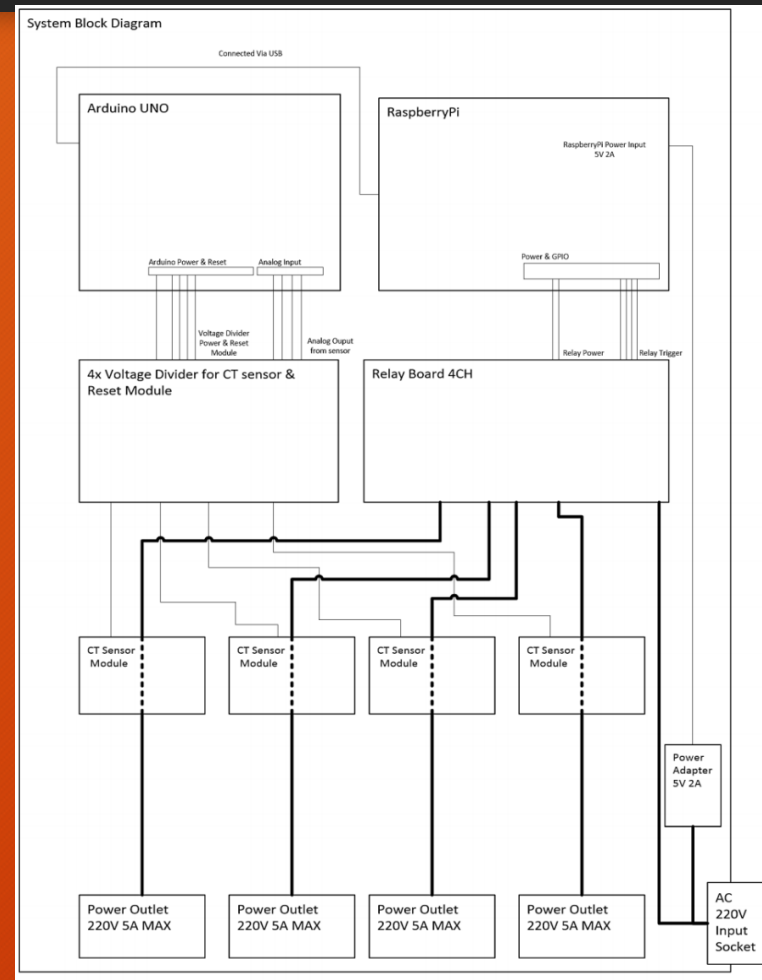
Student projects

Network Topology Generator and Device Security Assessment on Android Mobile Device.



Student project

Design and Implementation of Web Based Home Electrical Appliance Monitoring, Diagnosing, and Controlling System



career

Network
Administrator

Network
Engineer

Lecturer

Researcher

Research topic

Network Simulator

Operating systems
development

Embedded Systems

etc

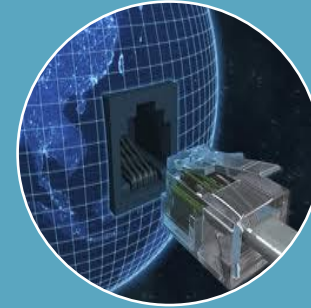
Applied network



Mendalami teknologi jaringan komputer yang berbasis peralatan jaringan komputer CISCO (CISCO equipment)



Mata kuliah dasar untuk peminatan ini adalah Jaringan Komputer - A
Algoritma dan Pemrograman - A



Dengan menyelesaikan peminatan ini, mahasiswa akan memiliki pengetahuan dan ketrampilan mengelola jaringan komputer yang berbasis peralatan CISCO



Applied network

Proses Peminatan

- Akan dilakukan proses seleksi Peminatan Applied Networking
- Jika LOLOS akan diikutkan dalam kelas Applied Networking di Binus University
- Jika TIDAK LOLOS seleksi maka :
 - Opsi 1 : Akan diproses untuk peminatan selanjutnya (sesuai ketentuan yang berlaku untuk masing-masing peminatan tersebut), atau
 - Opsi 2 : Mengikuti program credit earning melalui CCNA Course Binus Center

SyaratSeleksi Peminatan:

- Grade Nilai Akhir Algoritma dan Pemrograman = A
- Grade Nilai Akhir Jaringan Komputer = A
- IPK (s/d smt 3) ≥ 3.25
- TOEFL ≥ 500
- Jika peminat melebihi kapasitas maka nilai-nilai tersebut akan diranking

MATA KULIAH:

- Applied Networking 1
- Applied Networking 2
- Applied Networking 3

TOPIK SKRIPSI:

- Network Programming
- Socket Programming
- Network Based Application

Thank You