



Thesis Writing Instructions Effective from 2021, Even Semester

School of Computer Science Computer Science Study Program

Malang Campus

Jl. Araya Mansion No. 8 – 22, Araya, Malang
Telp. (62-341) 303 6969, Fax. (62-341) 303 6868

Home page : www.binus.ac.id/malang

I. INTRODUCTION

To fulfill the graduation requirements for the bachelor's degree program at Bina Nusantara University, each bachelor's degree student must write a thesis and thesis summary in the form of a scientific article, under the supervision of a thesis advisor.

Thesis is a scientific work to display the abilities of a student in solving a problem/designing a product, system, model, or strategy, in accordance with the field of knowledge that has been studied, to be further manifested in the form of research or non-research writing.

Thesis is a solution to a problem which can be in the form of a systematic description of the procedures that will be applied to research something, design/design products, systems, models, strategies, carry out Business Start-Ups, carry out Internships or it can also be a combination thereof.

I.1. Purpose of Writing Thesis

1. Students can gain experience and can try to apply or compare the knowledge and skills acquired during college with the reality in society.
2. Students can analyze, develop, and implement knowledge, knowledge, and skills acquired when conducting research on a problem or in designing/designing a product, system, model, strategy, running a Business Start-Up, carrying out Internship according to their field of knowledge

I.2. Thesis Type

The thesis is carried out based on research: The research thesis functions to test hypotheses (if any) and answer research questions.

II. THESIS WRITING

- II.1. Paper Format and Font Type
- II.2. Thesis Structure
 - II.2.1. Initial Section Format
 - II.2.2. Content Section Format
 - II.2.3. Closing Section Format
- II.3. How to Write Quotations
- II.4. How to Write References
- II.5. Scientific Article Writing based on Thesis

II.1. Paper Format and Font Type

The thesis uses A4 (80 gr) sized paper, starting from Chapter 1 to the attachment page The thesis is printed in a two-sided format. Left margin 4 cm, top, bottom and right margin 2.5 cm.

Type 1.5 spacing, using Times New Roman 12-point font. Italics are used to indicate foreign terms, emphasize certain terms, and write book or magazine titles. Bold letters are used to emphasize certain terms and chapter or sub-chapter titles.

II.2. Thesis Structure

The contents of the thesis consist of three main parts, namely the introduction, contents, and closing sections with the following structure:

Parts	Structure
Introductions	<ul style="list-style-type: none"> - <i>Halaman Sampul</i> - <i>Halaman Judul</i> - <i>Halaman Pernyataan Orisinalitas</i> (for soft cover) - <i>Halaman Persetujuan Dosen Pembimbing</i> (for hard cover) - <i>Halaman Pernyataan Dewan Penguji</i> (for hard cover) - <i>Halaman Pernyataan Persetujuan Publikasi Skripsi</i> (for hard cover) - Abstract - Preface

Parts	Structure
	<ul style="list-style-type: none"> - Table of Contents - List of tables - List of Figures - List of Appendix
Contents	<p>Research/Non-Research Thesis:</p> <ul style="list-style-type: none"> - Chapter 1 Introduction - Chapter 2: Reference Review - Chapter 3: Research Methods - Chapter 4: Results and Discussion - Chapter 5: Conclusions and Suggestions
Closing	<ul style="list-style-type: none"> - Reference - Appendix (including photocopies of Survey Letters) - Curriculum Vitae

THESIS REPORT WRITING TECHNIQUES

1. Paper Size
 - A4 (80 gr), Starting from Chapter 1 to the attached thesis pages are printed in a two-sided format.
 - Page Setup on the computer must be adjusted.
2. Left margin 4 cm, right margin, top margin and bottom margin 2.5 cm
3. Title page begins with a distance of 4 spaces from the top margin.
4. The Binus logo can be downloaded at <http://binusmaya.binus.ac.id> menu Support >> Download Center >> Thesis/Internship >> Binus Logo.
5. The right edge of the text is aligned.
6. All authors' names in the list of references must be written even if the names are the same. Names should be written starting with the family name, followed by the abbreviated first name and middle name (according to APA style).
7. There should be no blank pages except the end of an article.
8. It is not allowed to add spaces between words in a line with the aim of aligning the right edge.
9. You may not place titles, sub-headings, and table identities at the end of the page.
10. It is not allowed to use language symbols in thesis title such as: &, /, @, etc.
11. Font type – Times New Roman with 1.5 spacing.
12. Font Size
 - Article title, Times New Roman 12pt, Bold, CAPITAL, Center.
 - CHAPTER Title, Times New Roman 12pt, Bold, CAPITAL, Center.
 - Subchapter Title, Times New Roman 12pt, Bold, only the first letter of a word is capitalized (Capital), left side.
 - Fill in the material Times New Roman 12pt.
13. Judul bagan/gambar, teks tabel adalah *Times New Roman* 12pt.
14. Letter Model
 - Words that are not in Indonesian (foreign and regional), unfamiliar terms, important parts, examples in the main text, titles of books, journals, magazines, and newspapers in the list of references are written in italics.
 - Chapter titles, sub-chapter titles are written in bold.
15. Typing Distance
 - Abstract to Fill Abstract 2 spaces.
 - Fill in Abstract to Keywords 1 space.
 - Fill Abstract 1 space.
 - Chapter Title to Subchapter 2 spaces.
 - Subchapter to Material Contents 1 space.

- Fill Material into Tables/Images 2 spaces.
- Tables/Images to Content Material 2 spaces.

16. Table Writing

- The title spacing between tables or images and the text before or after it is 2 spaces.
- The table title is placed on the same page, entitled: Table
- (numbered as identity) and written on the table.
- The title of the table is written in capital letters on the first letter of each word, except for conjunctions or conjunctions.
- If the title of the table is more than one line, the second line and so on are written parallel to the initial letter of the title with a single space spacing, may not cut the table into 2 parts. If you have to cut the table to the next page, then the table on the next page must be given a table description as stated on the previous page.
- If it is possible to be placed on the same page.
- If the table is more than half a page, it must be placed on a separate page.
- The table text does not use columns, only the line lines are visible.

II.2.1. Initial Section Format

Each page at the beginning is numbered with small roman numerals: i, ii, iii, iv, etc. and written below the middle, 2.5 cm from the bottom. Especially on the title page is not numbered. The initial part consists of:

Cover Page

- Top cover page contains full and clear title; type of scientific work, namely *Skripsi*; student name and registration number; Bina Nusantara University logo can be downloaded at <http://binusmaya.binus.ac.id> menu Support >> Download Center >> Thesis/Internship >> Binus logo.
- The bottom cover page contains the name of the Study Program (Computer Science Study Program); School/Faculty (School of Computer Science), Bina Nusantara University; city and year the thesis was made. All are typed in Times New Roman typeface, with a size of 12 points. The composition of the letters and the layout are arranged symmetrically. See appendix 1.

Title page

- The format of the title page is the same as the cover page, only additional information is added, namely for the purpose and within what framework the thesis is prepared.
- In detail, the contents of the title page are the Thesis Title; Text (Thesis is submitted as one of the requirements for a bachelor's degree in the Computer Science Study Program for Undergraduate Education); Student name; Student ID; Bina Nusantara University logo (in color); Study Program (Computer Science Study Program); School/Faculty (School of Computer Science), Bina Nusantara University; City and year of thesis writing. Times New Roman font 12 points, bold, 1.5 spacing. An example of a title page is in appendix 2.

Halaman Pernyataan Orisinalitas (Soft Cover)

- This page contains a written statement from the author that the thesis is the result of his own work and is written according to the rules of scientific writing. The thesis title on the originality page is bilingual in Indonesian and English. English title written in italics.
- This page is signed by the student and approved by the thesis supervisor. An example of an Originality Statement Page can be seen in Appendix 3.

Halaman Persetujuan Dosen Pembimbing (Hard Cover)

- The thesis advisor's approval page functions to guarantee the eligibility, validity and acceptance of the thesis by Bina Nusantara University.
- The thesis advisor's approval page contains: Title; Subtitles; Bina Nusantara University logo; Student name; Student ID; Approval of the Thesis Advisor and Head of the Study Program; Name and Signature of the Thesis Advisor; Name and Signature of Head of Study

Program; and Approval Date. Times New Roman font, 12 point, bold, 1.5 space. Format of the Advisory Lecturer's Approval Page for Hard Cover see appendix 4.

Halaman Pernyataan Dewan Penguji (Hard Cover)

The Board of Examiners Statement page is attached after the student is declared passed at the thesis defense session before binding the book in hard cover. This page can be obtained by students at Student Services, after revising the thesis based on the thesis defense minutes and the minutes have been signed by the Chief Examiner and Thesis Advisor.

Halaman Pernyataan Persetujuan Publikasi Skripsi (Hard Cover)

This page contains a student statement to grant non-exclusive rights to Bina Nusantara University, especially the library. The content of the page is the word "STATEMENT", followed by a sentence of student statement, Malang, date, name and student ID. Times New Roman font 16 (title, bold) and 12 point (content), space 1.5. In 1 (one) page statement with 1 (one) student identity and 1 (one) student signature only (made per 1 (one) student page according to the number of students in the group). See Appendix 5a. If the company has submitted a letter of objection to thesis publication (which has been signed by the supervisor), then the student attaches the Thesis Publication Consent Statement page (if the company objects to giving permission for publication) in appendix 5b.

Halaman Pernyataan Persetujuan Publikasi Internasional

This page contains a student statement to approve the thesis that has been tried and passed for publication with the Thesis Advisor to international publications.

- The contents of the page can be seen in attachment 5c. Times New Roman font 16 (title, bold) and 12 point (content), space 1.5.
- 1 (one) page statement signed by all students and Supervisors, but the signature on the stamp duty is the First Author if the student is the First Author, or the Second Author if the Supervisor is the First Author and the student is the Second Author. Determination of the First Author, Second Author, etc. according to the agreement between the student and the Supervisor.
- This page is made in 3 copies (original):
 - 1 copy for Supervisor
 - 1 copy to be kept by students and
 - 1 copy to be attached when submitting hard covers.
- If the company has submitted an objection letter to thesis publication, then this page may not exist, and the student is required to attach the Thesis Publication Consent Statement Page (if the company objects to giving permission for publication) in appendix 5b.
- If the Supervisor or Student objects to publishing their thesis in international publications, they must make a statement which must be signed by the Head of Study Program and the Dean, then attached when the hard cover is submitted.

Abstract and Keywords

- Abstract made based on ISO 214-1976. The abstract page begins with the full title of the thesis
- Student, Student ID, Title "ABSTRACT" and "ABSTRACT", Contents. The title is typed in the center with Times New Roman font (16 points, capital, bold). The contents of the abstract are written using Times New Roman font, 12 points, 1 space, and Italic for abstracts in English and Indonesian. Abstract example see appendix 7a and 7b.
- Keywords are main words/phrases (nouns) that function as source access points, taken from the thesis title.
- Abstract must be written in 1 (one) page and bilingual (English–Indonesia) top and bottom.
- Especially for Internship, no need for an abstract

Preface

This page contains student thanks addressed to the Rector, Dean, Head of Study Program, Thesis Advisors, Families, and other parties who have assisted in the preparation of the thesis. Times New Roman font (title, 16 points, bold), and 12 point (fill), space 1.5.

Table of Contents

- The table of contents contains chapter titles, sub-chapter titles, sub-chapter titles accompanied by the page number where they are loaded in the text.
- Chapter titles are written in capital letters, while sub-chapters and sub-chapter titles are written in title case (only the first capital letter, except for the name).
- Table of contents including Table of Tables, List of Figures, and List of Attachments are numbered in small Roman letters (i, ii, iv, etc.). Example in appendix 8.
- Times New Roman font (title, 14 point, bold), and 12 point (fill), space 1

List of Tables

List of tables are the tables in the thesis, in the form of table titles and pages where tables are placed. Times New Roman font (title, 14 point, bold), and 12 point (content), 1 space.

List of Figures

List of images in the form of diagrams, photos in the thesis, in the form of image titles and pages where images are placed. Times New Roman font (title, 14 point, bold), and 12 point (content), 1 space.

Appendix List

List of attachments in the form of information supporting thesis analysis such as questionnaires, data analysis results, coding, in the form of attachment titles and pages where attachments are placed. Times New Roman font (title, 14 point, bold), and 12 point (content), 1.5 spacing.

II.2.2. Content Section Format

- Odd page numbers are written in Latin numerals: 1, 3, 5, 7, 9, etc. in the upper right corner. Specifically on the chapter title page, the page number is written below the middle 1.5 cm from the bottom.
- Even page numbers are written in Latin numbers: 2, 4, 6, 8, 10, etc. in the upper left corner. Specifically on the chapter title page, the page number is written below the middle 1.5 cm from the bottom.
- The title of the chapter starts from the odd page, if the last chapter is on an odd page, then the next chapter starts from the odd page, so that there is 1 (one) even page that is blank.
- Each chapter is always preceded by a chapter title written in the middle (center). About 2.5 cm from the top is written "CHAPTER n", where n is the chapter number and written in normal letters: 1, 2, 3, 4, 5. Two spaces below are written the chapter title in all capital bold letters.
- The research content section consists of 5 chapters with the following contents:

CHAPTER 1 INTRODUCTION

- Introduction contains background, problem formulation, hypothesis, scope, objectives and benefits, research methods, and writing systematics.
- State of the art (literature review) needs to be added to the background (chapter 1), namely by summarizing the results of previous research or articles (not taken from textbooks, but from scientific journal articles or proceedings).

CHAPTER 2 REVIEW OF REFERENCES

- The reference review contains an explanation of the variables used in the study.
- The hypothesis used must be based on a framework.

- State-of-the-art explanation (background of chapter 1) is elaborated in this chapter in the form of a minimum of 5 (five) scientific articles (3 (three) of which are published in international scientific journals) recommended for publication in the last 5 years. The literature in question is scientific articles, criticism of a work in journals/proceedings/other sources.
- References can also be in the form of textbooks or other sources (official websites, scientific magazines, and so on). Websites that are blogs (Wikipedia, Blogspot, and so on) are not permitted.

CHAPTER 3 RESEARCH METHODS

- The research method is the method used to answer the hypothesis described in CHAPTER 1.
- The results of the research methods presented in this chapter are in the form of results of analysis and design as well as proof of hypotheses using existing statistical methods.

CHAPTER 4 RESULTS AND DISCUSSION

- Results and discussion developed based on research in the form of discussion or quantitative and/or qualitative descriptive analysis associated with each research variable and supported by the results of hypothesis testing using existing statistical methods.
- Data is displayed in the form of graphs, tables and pictures, followed by the presentation of research results in accordance with the discussion.

CHAPTER 5 CONCLUSIONS AND RECOMMENDATIONS

- Conclusion contains research results (Chapter 4) that can answer the research problems presented in Chapter 1.
- Suggestions containing the implications of research results and suggestions for further research, as well as suggestions for users who will use the research results.

II.2.3. Closing Section Format

The page numbering in this section is a continuation of the numbering in the content section. The closing section consists of:

Reference

- References contain literature referred to/cited in the Thesis and written according to APA (American Psychological Association) standards.
- References are written on the back page before the attachment. Write the title 'REFERENCE', at the top center of the page, in Times New Roman 14-point font, bold, capital.
- Procedure for writing using the American Psychological Association (APA) standard version 5 or 6.

Appendix

Appendix contain information or information that is considered important as a support for the thesis, for example research instruments, results of statistical calculations, formulas, research permits, and others. Each attachment is numbered sequentially with Arabic numerals (1, 2, 3...).

Curriculum Vitae

Curriculum Vitae Templates can be downloaded on the Binusmaya Support menu, select Download Center, select category: Thesis/Internship
An example of a downloaded Curriculum Vitae is in Appendix 10.

II.3. How to Write Quotations

- The citation format used follows the APA standard, namely **there are no footnotes** to state the reference publication.
- All references to books, magazine articles, statistical sources, etc. referred to by writing the **surname, year of publication, and page**, all in brackets. References can be at the beginning, middle or end of the paragraph.
- Write the quotation according to the letter in the paragraph (Times New Roman, 12 points). If the length of the quote is 3 lines or 40 words, then the quote is inserted into the paragraph. But if more, the quotation will be separated from the paragraph

- **Direct Quotes**

Written according to the language using quotation marks and integrated in the text. The author's name is enclosed in brackets with the year of publication and the page number.

Example:

King, L. A. (2014, p. 137) more specifically says that, "*Sweat from those who were afraid led to greater caution in the smellers than sweat from physical activity.*"

From the research it was concluded that, "*Sweat from those who were afraid led to greater caution in the smellers than sweat from physical activity.*" (King, L. A., 2014, p. 137).

- **Indirect Quotes**

Written in their own language without quotation marks and integrated in the text. The author's name is usually included in the text or mentioned in brackets with the year of publication and page number.

Example:

King, L. A. (2014, p. 236) says that although most people say they are good at remembering faces, they are usually not as good as they think.

Although most people say that they are good at remembering faces, they are usually not as good as they think (King, L. A., 2014, p. 236).

II.4. How to Write References

References follow the APA (American Psychological Association) standards which contain respectively: (1) author's name in the order of: last/family name, first letter first name, and first letter middle name, without academic degree; (2) year of publication; (3) title, including subhead; (4) city of issue; (5) the name of the publisher. The author's name consists of two parts written in the order of the last name followed by a comma, the first letter of the first name ends with a period. If the referenced source is written by the team, all the names of the authors must be included in the list of references. If there are several books written by the same author and published in the same year, the publication data is followed by the symbols a, b, c, etc. in alphabetical order by book title.

1. References from Books

Author's name (period), year of publication in parentheses (period), book title (italics) ending in a period, city of publisher and publisher's name separated by a colon (:). If there is a book written in large, except for conjunctions. The final section is written in a row the journal of the year, what number (in brackets), and the page of the article.

Example:

Aras, M. (2014). *Political communication: a practical approach*. Jakarta: Binus Media & Publishing.

2. References from articles in journals

Author's name, year, article title (written in plain print), and capitalize the first word except conjunctions. Journal names are written in italics, and the initial letter of each word is capitalized, except for conjunctions. The final section is successively written in the journal of the year, what number (in brackets), and the page number of the article.

Example:

Mulyono, N. B. (2013). User behavior assessment of household electric usage. *The Asian Journal of Technology Management*, vol 6, no. 2, (pp. 65-71).

3. References from articles in magazines or newspapers

Author's name, date, month, and year. The title of the article is written in regular print, and capitalizes at the beginning of each word except for conjunctions. Names of magazines/newspapers are written in lowercase except for the first letter at the beginning of each word, and italicized. Page numbers are mentioned at the end.

Example:

Febrianti, T. (2015). Hunt for seeds. *National Geographic Indonesia*, vol 11, no. 5, pp. 42-55.

4. References from Thesis, Dissertation

Author's name, year (listed on the cover), title of thesis, dissertation (italics) followed by final thesis statement, thesis, unpublished dissertation, name of city of college, name of faculty and college.

Example:

Wijaya, B. S. (2013). *English slang words in informal communication among 8th semester students of English department in Binus University*. Skripsi S1. Universitas Bina Nusantara, Jakarta.

5. Referrals from the Internet

a. In the form of articles from journals

Author's name, year, article title, journal name (italics) with information in brackets (Online), volume and number, ending with the address of the reference source accompanied by a description of when it was accessed between brackets.

Example:

Gerbasi, A., & Dominika L. (2015). Trust-building in international business ventures. *Baltic Journal of Management (Online)*, vol 10, no. 1, pp. 30-51, accessed 17 Juni 2015 from <http://www.emeraldinsight.com/doi/full/10.1108/BJM-04-2013-0056>.

b. In the form of discussion material

Discussion material (italics) with the author's name, date, month, year, topic of discussion material, name description in brackets (Online) and ending with the e-mail address of the reference source accompanied by a statement when it was accessed between brackets.

Example:

Zachariah, B. February 9 (2013). Samba 4: Linux active directory server. (*Online*). Retrieved June 17, 2015 from b_zachariah@linuxforums.org

II.5. Scientific Article Writing based on Thesis

II.5.1. Contents of Working Papers

After the thesis defense and declared pass, students will revise the thesis according to the minutes during the thesis session. Next, students are asked to submit hard cover thesis, thesis summary in the form of working papers. For internship thesis, it is not required to make a working paper.

II.5.2. Working Paper Summary Format

II.5.2.1. Writing Systematics

ARTICLE TITLE

(Informative, reflects the core content of the writing, consists of 5-15 words, CAPITAL letters)
(Center, Bold, Times New Roman 20)

Writer's name

(Written without a title, Center, Bold, Times New Roman 16)
Agency name, address, tel/fax, author's email (binus email)
(Center, Times New Roman 10)
(Student name is written first, finally the name of the thesis advisor)

ABSTRAK

(Center, Times New Roman, 11, Bold)

(Remarks: abstract letters are the same as the contents of the article, only italicized)

Abstracts are written in italics in English and Indonesian of 150-250 words. Abstract is a summary of the article, containing the objectives, methods, results, and conclusions of the thesis results written in one paragraph.

***Keywords:** 3-5 keywords (most important) taken from the title and content of the article*

The main writing format consists of 1 left-right aligned column on A4 paper. 4 cm left, right, top and bottom 2.5 cm. Writing in Microsoft Word Times New Roman 10 with 1 space, 8-12 pages.

The working paper format can be adapted to the template/format provided by the thesis advisor, including the use of language.

INTRODUCTION (Chapter title written in Times New Roman, font 13, bold)

Contains background, hypothesis (research thesis), problem formulation, objectives and benefits, research methods, and systematics of writing. Then, explained his own research which has more value and is up to date compared to previous studies. In this section only relevant/important theoretical bases may be given. Introduction typed in paragraphs, without using subtitles. Sources are cited by writing in brackets: Author's last name and year of publication. Terms in foreign languages are written in italics.

RESEARCH METHODS

Mention the research methods carried out, explaining how to conduct research, such as determining samples, instruments, how to prepare research materials, research designs or designs, research procedures, methods of data collection, testing, results, and research evaluation.

RESULTS AND DISCUSSION

For research thesis, this section describes the results of research and discussion conducted with an emphasis on proving the hypothesis (quantitative research), answers to problems (qualitative research).

For non-research thesis, this section describes the results in the form of systems/products/businesses/formulas which are comprehensively discussed.

*Working Paper

Results can be in the form of tables, graphs, images, etc. accompanied by an explanation in the paragraph before or after it. If the discussion is too long, sub-headings can be made. The table title is above and the figure title is below. In this section may be given enough theory as a support for the discussion.

Examples of tables and figures as follows:

Table 1 Student Frequency Distribution

No	Interval	Frekuensi	%	Kategori
1.	85 - 100	59	28.36	Sangat Baik
2.	75 - 84	93	44.71	Baik
3.	65 - 74	37	17.78	Cukup
4.	55 - 65	19	09.15	Buruk
Jumlah		208		100.00

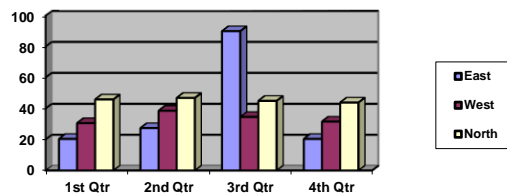


Figure 1 Tool Speed Changes

CONCLUSIONS AND SUGGESTIONS

The conclusion is in the form of a statement that what is expected as stated in the "Introduction", for example hypotheses, problem statements, designs, designs, etc., can finally be obtained in "Results and Discussion", so that there is conformity. In addition, suggestions can also be added to explain the prospects for further development of research results and applications which are prospects for the following studies.

REFERENCE

References only contain scientific articles, books and other sources that are actually referred to in writing. References must be complete, clear, and arranged alphabetically by author's name.

AUTHOR HISTORY

The author's name was born in the city (birth) on (date month year). The author completed his Bachelor/S2/S3 education at (University) in the field of (science) in (year). Currently working as (position) in (place of work). The author is active in (professional organizations) as (position).

II.5.2.2. Working Paper Writing Techniques

1. Paper Size
 - A4 (80 gr), starting from Chapter 1 to the attached thesis pages are printed in a two-sided format.
 - Page Setup on the computer must be adjusted.
2. Left margin 4 cm, right margin, top margin and bottom margin 2.5 cm.
3. Title page begins with a distance of 4 spaces from the top margin
4. The right edge of the text is aligned.
5. All authors' names in the list of references must be written even if the names are the same. Write the name starting with the family name, followed by the abbreviation of the first name and middle name. (According to APA style).
6. There should be no blank pages except the end of an article.
7. It is not allowed to add spaces between words in a line with the aim of aligning the right edge.
8. You may not place titles, subtitles, and table identities at the end of the page.
9. Font type – Times New Roman with a spacing of 1.5 spaces.
10. Font Size
 - Article title, Times New Roman 20 pt, Bold, CAPITAL, Center.
 - CHAPTER Title, Times New Roman 13pt, Bold, CAPITAL, on the left.
 - Subchapter Title, Times New Roman 12pt, Bold, only the first letter of a word is capitalized (Capital), left side.
 - Fill in the material Times New Roman 12pt.
11. Chart/figure title, table text is Times New Roman 12pt
12. Letter Model
 - Words that are not in Indonesian (foreign and regional), unfamiliar terms, important parts, examples in the main text, titles of books, journals, magazines and newspapers in the list of references are written in italics.
 - Chapter titles, sub-chapter titles are written in bold.
13. Typing Distance
 - Abstract to Fill Abstract 2 spaces.
 - Fill in Abstract to Keywords 1 space.
 - Fill Abstract 1 space.
 - Chapter Title to Subchapter 2 spaces.
 - Subchapter to Material Contents 1 space.
 - Fill the Material into Tables/Images 2 spaces (Tables/Images into the Contents of the Materials 2 spaces).
14. Table Writing
 - The title spacing between tables or images and the text before or after it is 2 spaces.
 - The table title is placed on the same page, entitled: Table..., (numbered as an identity) and written above the table.
 - The title of the table is written in capital letters on the first letter of each word, except for conjunctions or conjunctions.
 - If the title of the table is more than one line, the second line and so on are written parallel to the initial letter of the title with a single space spacing, may not cut the table into 2 parts. If you have to cut the table to the next page, then the table on the next page must be given a table description as stated on the previous page.
 - If it is possible to be placed on the same page.
 - If the table is more than half a page, it must be placed on a separate page.
 - The table text does not use columns, only the line lines are visible.

Example:

Tablw 2 BINUS Student Score Frequency Distribution

No	Interval	Frekuensi	%	Kategori
1.	85 - 100	59	28.36	Sangat Baik
2.	75 - 84	93	44.71	Baik
3.	65 - 74	37	17.78	Cukup
4.	55 - 65	19	09.15	Buruk
Jumlah		208		100.00

III. ETHICS CODE FOR WRITING SCIENTIFIC WRITINGS

Guide to Thesis Citation

1. Direct citation of a scientific work and/or written work is the exact taking without changing the word or form of the sentence.
2. Indirect quotations are taking only the main parts and main ideas, then turning them into sentences or other forms which are basically the same in content and meaning.
3. Direct and indirect quotations must include the source referred to/quoted.
4. Inclusion of images must state the source from which the images were obtained.

Copyright infringement

Actions that can be categorized as part of copyright infringement include:

- a. Quoting or public broadcasting of a written or scientific work by loading or taking part of another person's writing, which then becomes the dominant part of the scientific work.
- b. Citations that intentionally do not include complete sources in accordance with the guidelines for writing scientific papers that are used as guidelines by the citing.

Violation of copyright and plagiarism will be subject to sanctions in accordance with the General Rules for Academic Affairs. Then sanctions will be given to students by referring to the *Peraturan Tata Tertib Kehidupan Kampus* as contained in *Peraturan Universitas Bina Nusantara* number 1426/SK/PTTKK/UBN/VII/2016 which can be downloaded at binusmaya.binus.ac.id menu: **Support >> Download Center >> Category: Rules >> Title: Peraturan Tata Tertib Kehidupan Kampus.**

Appendix 1

Halaman Sampul

(margins and spacing are adjusted to the thesis writing techniques on page 4)

<<JUDUL SKRIPSI>>

SKRIPSI

Oleh

<<Nama Penulis>> <<NIM >>
[<<Nama Penulis>> <<NIM >>]
[<<Nama Penulis>> <<NIM >>]



**Program Studi Teknik Informatika
School of Computer Science
Universitas Bina Nusantara
Malang
<< Tahun Pembuatan Skripsi >>**

Keterangan:

[] = *optional*

Appendix 2

Halaman Judul

(margins and spacing are adjusted to the thesis writing techniques on page 4)

<<JUDUL SKRIPSI>>

SKRIPSI

**diajukan sebagai salah satu syarat
untuk gelar kesarjanaan pada
Program Studi Teknik Informatika
Jenjang Pendidikan Strata-1**

Oleh

<<Nama Penulis>> <<NIM >>

[<<Nama Penulis>> <<NIM >>]

[<<Nama Penulis>> <<NIM >>]



**Program Studi Teknik Informatika
School of Computer Science
Universitas Bina Nusantara
Malang
<< Tahun Pembuatan Skripsi >>**

Keterangan:

[] = *optional*

Lampiran 3

Halaman Pernyataan Orisinalitas (*Soft Cover*)

Universitas Bina Nusantara

Pernyataan Kesiapan Skripsi untuk Ujian Pendadaran

Pernyataan Penyusunan Skripsi

[Kami/Saya], <<Nama Penulis>>

<<Nama Penulis>>

<<Nama Penulis>>

dengan ini menyatakan bahwa Skripsi yang berjudul:

<JUDUL SKRIPSI BAHASA INDONESIA>

<JUDUL SKRIPSI ENGLISH>

adalah benar hasil karya [kami/saya] dan belum pernah diajukan sebagai karya ilmiah, sebagian atau seluruhnya, atas nama saya atau pihak lain

<<tanda tangan>>

[<<tanda tangan>>]

[<<tanda tangan>>]

<<Nama Penulis>>

[<<Nama Penulis>>]

[<<Nama Penulis>>]

<<NIM>>

[<<NIM>>]

[<<NIM>>]

Disetujui oleh Pembimbing

[Kami/Saya] setuju Skripsi tersebut layak diajukan untuk Ujian Pendadaran

<<tanda tangan>>

[<<tanda tangan>>]*

<<Nama Pembimbing 1>>

[<<Nama Pembimbing 2/Mitra>>]*

<<Kode Dosen>>

[<<Kode Dosen/Pembimbing Mitra>>]*

<<Tanggal Persetujuan>>

[<<Tanggal Persetujuan>>]*

Keterangan:

[] = opsional

* = Jalur Internship

<<>> = diisi sesuai dengan data mahasiswa

Lampiran 4

Halaman Persetujuan Dosen Pembimbing (*Hard Cover*)

<JUDUL SKRIPSI>

SKRIPSI

Disusun oleh:

[<tanda tangan>>
<<Nama Penulis>>
<NIM>>

[<<tanda tangan>>]
[<<Nama Penulis>>]
[<<NIM>>]

[<<tanda tangan>>]
[<<Nama Penulis>>]
[<<NIM>>]

**Disetujui oleh:
Pembimbing dan Ketua Program Studi**

<<tanda tangan>>

[<<tanda tangan>>]***

<<Nama Pembimbing 1>>
<<Kode Dosen>>

[<<Nama Pembimbing 2/Mitra>>]***
[<<Kode Dosen/Pembimbing Mitra>>]***

<<tanda tangan>>

<<Nama Ketua Program Studi >>
Ketua Program Studi Teknik Informatika

Universitas Bina Nusantara
Malang
<< Tahun Pembuatan Skripsi >>

Keterangan:

[] = *optional*

*** = *Jalur Interhsip (pilih salah satu)*

Lampiran 5a

Halaman Pernyataan Persetujuan Publikasi Skripsi

PERNYATAAN

Dengan ini saya,

Nama : <<Nama Mahasiswa>>
NIM : <<NIM Mahasiswa>>
Judul Skripsi : <<Judul Tugas Akhir>>

Memberikan kepada Universitas Bina Nusantara *hak non-eksklusif* untuk menyimpan, memperbanyak, dan menyebarluaskan Skripsi karya saya, secara keseluruhan atau hanya sebagian atau hanya ringkasannya saja, dalam bentuk format tercetak dan atau elektronik.

Menyatakan bahwa saya, akan mempertahankan **hak eksklusif** saya, untuk menggunakan seluruh atau sebagian isi Skripsi saya, guna pengembangan karya di masa depan, misalnya bentuk artikel, buku, perangkat lunak, ataupun sistem informasi.

Malang, <<tanggal>>

Hormat Saya,

Diketahui Oleh,

<<Tanda tangan>>

<<Tanda tangan>

<<Nama Mahasiswa>>

<<Nama Dosen>>

<<NIM Mahasiswa>>

<<Kode Dosen>>

Lampiran 5b

Halaman Pernyataan Persetujuan Publikasi Skripsi (jika perusahaan keberatan memberikan izin publikasi)

PERNYATAAN

Dengan ini saya,

Nama : <<Nama Mahasiswa>>

NIM : <<NIM Mahasiswa>>

Judul Skripsi : <<Judul Skripsi>>

Memberikan kepada Universitas Bina Nusantara **hak non-eksklusif** untuk menyimpan Skripsi karya saya, secara keseluruhan atau hanya sebagian atau hanya ringkasannya saja, dalam bentuk format tercetak dan atau elektronik.

Menyatakan bahwa saya, tidak akan menggunakan seluruh atau sebagian isi Skripsi saya, dalam bentuk apapun juga termasuk dalam penelitian karya ilmiah saya selanjutnya.

Malang, <<tanggal>>

Hormat Saya,

Diketahui Oleh,

<<Tanda tangan>>

<<Tanda tangan>>

<<Nama Mahasiswa>>

<<Nama Dosen>>

<<NIM Mahasiswa>>

<<Kode Dosen>>

Halaman Pernyataan Persetujuan Publikasi Internasional

SURAT PERNYATAAN

<<Kami/Saya>>, yang bertandatangan di bawah ini:

1. Nim : _____
Nama : _____
Fakultas – Program Studi : _____ - _____
2. <<Nim : _____>>
<<Nama : _____>>
<<Fakultas – Program Studi : _____ - _____>>
3. <<Nim : _____>>
<<Nama : _____>>
<<Fakultas – Program Studi : _____ - _____>>

Dengan ini menyatakan bahwa karya yang berjudul:

Di bawah bimbingan dosen:

1. D_____ - _____
2. <<D_____ - _____>>

Telah dijadikan sebagai Skripsi pada Program Studi di Universitas Bina Nusantara dan telah diuji pada semester <<Ganjil/Genap>> tahun <yyyy/yyyy>, disetujui untuk dielaborasi dan diajukan bersama-sama sebagai publikasi internasional, dengan ketentuan:

- <Nama>: sebagai Penulis Pertama;
- <Nama>: sebagai Penulis Kedua;
- <<dst.>>

Para penulis di atas sekaligus merupakan pemegang hak cipta atas publikasi internasional tersebut. Pernyataan ini dibuat dengan penuh kesadaran dan tanpa paksaan dari pihak manapun.

Malang, _____

Penulis Pertama,

Penulis Kedua,

<<dst.>>

<<Materai Rp 10.000,->> <<Atau>> <<Materai Rp 10.000,->>

<Nama>

<Nama>

<<dst.>>

Lampiran 6

Contoh Surat Keterangan Survei

SURAT KETERANGAN

NOMOR : XXXXXXXXXXXXX

Yang bertanda tangan di bawah ini:

Nama : xxxxxxxxx

Perusahaan : xxxxxxxxx

Alamat : xxxxxxxxx

Dengan ini menyatakan bahwa:

Nama : xxxxxxxxx

NIM : xxxxxxxxx

Program Studi : xxxxxxxxx

Benar telah melakukan Survei Skripsi di bagian xxxxxxxx, sejak tanggal xxxxx – xxxxx di PT. xxxxxxxxx dengan judul "XX" sebagai syarat untuk kelulusan Skripsi pada Program Studi xxxxxxxxx di Universitas Bina Nusantara.

Demikianlah surat pemberitahuan ini agar dapat dipergunakan sebaik-baiknya dan sebagaimana mestinya, atas perhatian dan kerjasamanya kami ucapkan terima kasih.

[Kota, dd mm yyyy]

(tanda tangan dan cap)

(Jabatan)

(Nama)

Posisi kop surat disesuaikan dengan template perusahaan

Lampiran 7a

Contoh Halaman Abstrak

(margin dan spasi disesuaikan dengan teknik penulisan Skripsi pada halaman 4)

UNIVERSITAS BINA NUSANTARA

Program Studi Teknik Informatika
School of Computer Science
Skripsi Sarjana Teknik Informatika

<<**JUDUL SKRIPSI DITULIS DI SINI**>>

XX

<<Nama Penulis>> <<NIM>>
[<<Nama Penulis>> <<NIM>>]
[<<Nama Penulis>> <<NIM>>]

ABSTRAK

Tujuan penelitian ialah xxxxxxxx xxxxxxxx xxxx xxxxxxxx xxxxxxx xx xx... Metode penelitian xxxxxxxx xxxxxxxx xxxxxxx xxxx xxxx xxx xxxxx xxxxxx xxxxxx xxxxxx xxxxxx xxx xxxxxx xxxxxxxx xxxxxxxxxxxxxxxxxxx xxxxxxxxxxxxxxxxxxx xxxxxxxxxxxxxxxxxxx xx xx xxxx xxx xxxxx xx xxx x xxx xx. Hasil yang dicapai xxxxxxx xxxxxx xxxxxx xxxxxx xxxxxx xxx xxx xxx xxx xxx xx xxx xxx xx xx xxx xx. Simpulan xxxxxx xxxxxx xxxxxx xxxxxx xxx xxx xxxxxxxx.

(keterangan: abstrak dalam satu paragraf, 100-200 kata)

Kata Kunci : xxxxxxxxxx, xxxxxxxxxx, xxxxxxxxxxxxxx, xxxxxxxxxxxxxx

Keterangan:
[] = optional

Contoh Abstrak berdasarkan Penelitian

(margin dan spasi disesuaikan dengan teknik penulisan Skripsi pada halaman 4)

UNIVERSITAS BINA NUSANTARA

Program Studi Teknik Informatika
School of Computer Science
Skripsi Sarjana Teknik Informatika

**KLASTERISASI DAN PENCARIAN THREAD PADA FORUM BERBASIS WEB
MENGUNAKAN LATENT SEMANTIC ANALYSIS**

<<Nama Penulis>> <<NIM>>

[<<Nama Penulis>> <<NIM>>]

[<<Nama Penulis>> <<NIM>>]

ABSTRACT

The goal of research was to produce a dynamic categorization for clustering and searching tasks by utilizing the main ideas of thread posts. Research methods were conducted by problem identification, algorithm development, algorithm implementation, and evaluation. Web Forum Thread Summarization (WFTS) served as the concept model which would be further developed specifically for clustering and searching. Latent Semantic Analysis (LSA) was applied as the core of the algorithm. Evaluation used two approaches, those were Questionnaire survey and benchmarking. The result of this thesis was an achievement of 77.04% clustering accuracy. It can be concluded that the system can certainly reduce the workload of a human moderator.

Keywords: *Clusterization, thread searching, web based forum, semantic analysis*

ABSTRAK

Tujuan penelitian menghasilkan kategorisasi dinamis untuk melakukan klusterisasi dan mencari task dengan mengolah ide utama dari thread post. Metode penelitian dibagi menjadi identifikasi masalah, pengembangan algoritma, implementasi, dan evaluasi. Web Forum Thread Summarization (WFTS) bertindak sebagai concept model, yang akan dikembangkan lebih spesifik untuk klusterisasi dan pencarian. Latent Semantic Analysis (LSA) akan diterapkan sebagai intisari algoritma. Evaluasi dilakukan dengan dua pendekatan yaitu kuesioner dan perbandingan dengan penelitian sejenis. Hasil penelitian adalah pencapaian akurasi klusterisasi sebesar 77%. Disimpulkan, sistem dapat mengurangi beban kerja human moderator.

Kata Kunci: *Klusterisasi, pencarian thread, forum berbasis web, analisis semantik*

Keterangan:

[] = *optional*

Lampiran 8

Contoh Daftar Isi Secara Umum

Halaman Sampul
Halaman Judul
Halaman Pernyataan Orisinalitas
Halaman Persetujuan Dosen Pembimbing (khusus *hard cover*)
Halaman Pernyataan Dewan Penguji (khusus *hard cover*)
Halaman Pernyataan Persetujuan Publikasi Skripsi (khusus *hard cover*)
Abstrak
Kata Pengantar
Daftar Isi
Daftar Tabel
Daftar Gambar
Daftar Lampiran

BAB 1 PENDAHULUAN

1.1 Latar Belakang
1.2 Rumusan Masalah
1.3 Hipotesis (Skripsi penelitian)
1.4 Ruang Lingkup
1.5 Tujuan dan Manfaat
1.6 Metode Penelitian
1.7 Sistematika Penulisan

BAB 2 TINJAUAN REFERENSI

2.1 xxxxxxxxxxxxxxxxxxxx
2.1.1 xxxxxxxxxxxxxxxxxxxx
2.1.2 xxxxxxxxxxxxxxxxxxxx
2.2 xxxxxxxxxxxxxxxxxxxx
2.2.1 xxxxxxxxxxxxxxxxxxxx
2.2.2 xxxxxxxxxxxxxxxxxxxx
dst.

BAB 3 METODE PENELITIAN (judul dan isi tergantung masalah yang diteliti)

3.1 xxxxxxxxxxxxxxxxxxxx
3.1.1 xxxxxxxxxxxxxxxxxxxx
3.1.2 xxxxxxxxxxxxxxxxxxxx
3.2 xxxxxxxxxxxxxxxxxxxx
3.2.1 xxxxxxxxxxxxxxxxxxxx
3.2.2 xxxxxxxxxxxxxxxxxxxx
3.3 xxxxxxxxxxxxxxxxxxxx
3.3.1 xxxxxxxxxxxxxxxxxxxx
3.3.2 xxxxxxxxxxxxxxxxxxxx
dst.

BAB 4 HASIL DAN PEMBAHASAN (judul dan isi tergantung masalah yang diteliti)

4.1 xxxxxxxxxxxxxxxxxxxx
4.1.1 xxxxxxxxxxxxxxxxxxxx
4.1.2 xxxxxxxxxxxxxxxxxxxx
4.2 xxxxxxxxxxxxxxxxxxxx
4.2.1 xxxxxxxxxxxxxxxxxxxx
4.2.2 xxxxxxxxxxxxxxxxxxxx
dst.

BAB 5 SIMPULAN DAN SARAN

5.1 Simpulan
5.2 Saran

REFERENSI

LAMPIRAN-LAMPIRAN (Termasuk fotokopi Surat Survei)
RIWAYAT HIDUP

CONTOH DAFTAR ISI PADA MASING-MASING PEMINATAN (TEKNIK INFORMATIKA)

Daftar Isi Skripsi Topik *E-Application/Mobile Application*

BAB 1 PENDAHULUAN

- 1.1 Latar Belakang
- 1.2 Rumusan Masalah
- 1.3 Hipotesis (Skripsi penelitian)
- 1.4 Ruang Lingkup
- 1.5 Tujuan dan Manfaat
- 1.6 Metode Penelitian
- 1.7 Sistematika Penulisan

BAB 2 TINJAUAN REFERENSI

- 2.1 Teori yang berkaitan dengan *Software Engineering* dan terkait dengan tema penelitian
- 2.2 Hasil penelitian/aplikasi sebelumnya atau aplikasi sejenis. Untuk penelitian sebelumnya diambil dari minimal 3 jurnal internasional.

BAB 3 METODE PENELITIAN

- 3.1 Metode penelitian (dapat berupa diagram alir kerangka berpikir)
- 3.2 Analisis
 - 3.2.1 Analisis sistem yang berjalan atau perbandingan aplikasi sejenis
 - 3.2.2 Analisis Permasalahan/Kebutuhan
 - 3.2.3 Usulan pemecahan masalah (Narasi, *Flowchart*)
- 3.3 Perancangan
 - 3.3.1 *Software Design Document*
 - a. Deskripsi *Software* (penjelasan singkat aplikasi yang dibuat dalam 1 paragraf)
 - b. Fungsi-Fungsi *software*
 - Dijelaskan secara singkat, untuk fungsi-fungsi yang memiliki algoritma khusus dapat menyertakan *flowchart* (contoh: algoritma *crawling* dokumen)
 - c. Kebutuhan Teknologi
 - *Database: MySQL, Microsoft SQL Server*, dan sebagainya
 - *Programming Language: Java, PHP*, dan sebagainya
 - 3.3.2 Perancangan Sistem (Pilih salah satu dari dua pilihan metode di bawah)
 - Perancangan UML Diagram
 - Use Case Diagram
 - Use Case Description
 - Activity Diagram
 - Sequence Diagram
 - Class Diagram
 - Perancangan *User interface*
 - Perancangan Database
 - Entity Relationship Diagram
 - Daftar Attribute
 - Daftar Primary Key

BAB 4 HASIL DAN PEMBAHASAN

- 4.1 Spesifikasi *System*
- 4.2 Prosedur Penggunaan Aplikasi
- 4.3 Evaluasi
 - 4.3.1 Evaluasi *user interface* (contoh: delapan aturan emas, lima faktor manusia terukur)
 - 4.3.2 Evaluasi sistem (pengujian sistem atau *User Acceptance Test*)

BAB 5 SIMPULAN DAN SARAN

- 5.1 Simpulan
- 5.2 Saran

Daftar Isi Skripsi Topik Database Applications / Applied Database

BAB 1 PENDAHULUAN

- 1.1 Latar Belakang
- 1.2 Rumusan Masalah
- 1.3 Hipotesis (Skripsi penelitian)
- 1.4 Ruang Lingkup
- 1.5 Tujuan dan Manfaat
- 1.6 Metode Penelitian
Jelaskan secara singkat. Teori dari metodenya dipaparkan di bab 2 dan penerapan dari metode penelitiannya dibahas mendetail di bab 3.
- 1.7 Sistematika Penulisan

BAB 2 TINJAUAN REFERENSI

- 2.1 Pengertian Database
- 2.2 Database Lifecycles
- 2.3 Entity Relationships Modelling
- 2.4 Normalisasi
- 2.5 Metode Penelitian Perancangan Database
- 2.6 Tools yang Digunakan: DFD, STD, UML, dst.
- 2.7 Teori yang Terkait Tema Penelitian
- 2.8 Studi hasil yang berkaitan atau analisa perbandingan fitur pada produk sejenis yang telah dikembangkan sebelumnya (Untuk Skripsi penelitian harus kedua pilihan tersebut diambil semua)

BAB 3 METODE PENELITIAN

- 3.1 Kerangka Pikir
- 3.2 Analisis Masalah
 - 3.2.1 Analisis Aplikasi Sejenis
 - 3.2.2 Diagram Aliran Data (DFD)
 - 3.2.2.1 Diagram *Context*
 - 3.2.2.2 Diagram Nol
 - 3.2.3 Definisi Sistem
 - 3.2.3.1 *Mission Statement*
 - 3.2.3.2 *Mission Objectives*
 - 3.2.3.3 *System Boundaries*
 - 3.2.4 Analisis Sistem yang Berjalan
 - 3.2.4.1 *Data Requirements*
 - 3.2.4.2 *Trans Req (Data Entries, Update, Queries)*
 - 3.2.4.3 *General System Requirements*
 - 3.2.5 Identifikasi Masalah
 - 3.2.6 Usulan Pemecahan Masalah (DFD 5-9 *business processes* minimum)
- 3.3 Perancangan *Database*
 - 3.3.1 *Conceptual Database Design*
 - 3.3.2 *Logical Database Design* (5-9 *table* minimum)
 - 3.3.3 *Physical Database Design*
- 3.4 Perancangan Diagram UML (*Optional*)
- 3.5 Perancangan Layar Aplikasi

BAB 4 HASIL DAN PEMBAHASAN

- 4.1 Spesifikasi *System (Hardware, Software, Jaringan)*
- 4.2 Implementasi
 - 4.2.1 Jadwal Implementasi
 - 4.2.2 Konversi Data, Backup & Recovery Data
- 4.3 Panduan Pengoperasian Program Aplikasi (print screen)
- 4.4 Evaluasi *Database (system integration test, user acceptance test)*
- 4.5 Evaluasi Aplikasi (*interview, questioner* berdasarkan 5 faktor manusia terukur, 8 *golden rules, survey*)

BAB 5 SIMPULAN DAN SARAN

5.1 Simpulan

Simpulan yang ditulis harus berdasarkan hasil evaluasi pada bab 4 dan tunjukkan parameter apa yang menjadi tolak ukur dalam rancangan yang dibuat. Tunjukkan apakah ada perbaikan pada rancangan yang dibuat dengan sistem yang sedang berjalan. Tidak boleh membuat kesimpulan hanya berisi sistem yang telah berjalan tanpa memberikan bukti data yang kuat.

5.2 Saran

Daftar Isi Skripsi Topik Intelligence System

BAB 1 PENDAHULUAN

- 1.1 Latar Belakang
- 1.2 Rumusan Masalah
- 1.3 Hipotesis (jika tipe Skripsi penelitian)
- 1.4 Ruang Lingkup
- 1.5 Tujuan dan Manfaat
- 1.6 Metode Penelitian
 - Solusi yang diusulkan
- 1.7 Sistematika Penulisan

BAB 2 TINJAUAN REFERENSI

- 2.1 Landasan teori yang relevan dengan topik skripsi
- 2.2 *Related Works*
 - Mengulas konten dari 3 jurnal/*proceeding*/artikel international ataupun lokal yang telah didefine di bab 1
 - Komparasi antara solusi yang diusulkan dengan metode atau penelitian lain.
 - Mengulas aplikasi sejenis (apabila ada)

BAB 3 METODE PENELITIAN

- 3.1 Kerangka Berpikir (bisa berbentuk flowchart)
 - Berupa langkah-langkah penyelesaian masalah (studi literature, perumusan masalah tidak termasuk di dalamnya)
- 3.2 Metode penelitian
 - Uraian dari setiap langkah/tahap yang sudah digambarkan pada kerangka berpikir
- 3.3 Perancangan UML (jika membuat aplikasi)
 - *Use Case Diagram*
 - *Activity Diagram*
 - *Class Diagram*
 - *Sequence Diagram*

BAB 4 HASIL DAN PEMBAHASAN

- 4.1 *Testing Environment*
- 4.2 Hasil (kecepatan, tingkat akurasi, presisi, dan lain-lain)
- 4.3 Evaluasi User
 - Subjektif (kuesioner, wawancara, dan lain-lain)
 - Objektif (komparasi terhadap *related work*)
- 4.4 Evaluasi Sistem (*optional*)

BAB 5 SIMPULAN DAN SARAN

- 5.1 Simpulan
 - Apakah semua tujuan dan manfaat pada bab 1 tercapai?
 - Apa yang membuat algoritma berhasil/performa lambat/akurasi menurun? Dan apa yang bisa dilakukan.
- 5.2 Saran
 - Saran-saran pengembangan penelitian untuk mencapai tujuan yang belum tercapai

Daftar Isi Skripsi Topik Jaringan

Topik Perancangan Jaringan

BAB 1 PENDAHULUAN

- 1.1 Latar Belakang
- 1.2 Rumusan Masalah
- 1.3 Hipotesis (Skripsi penelitian)
- 1.4 Ruang Lingkup
- 1.5 Tujuan dan Manfaat
- 1.6 Metode Penelitian
Jelaskan secara singkat. Teori dari metodenya dipaparkan di bab 2 dan penerapan dari metode penelitiannya dibahas mendetail di bab 3.
- 1.7 Sistematika Penulisan

BAB 2 TINJAUAN REFERENSI

- 2.1 Teori yang berkaitan dengan Jaringan
 - 2.1.1 Teori Jaringan Komputer
 - 2.1.2 Teori OSI dan TCP/IP Layers
 - 2.1.3 Teori Protokol yang digunakan
 - 2.1.4 Teori *device* yang digunakan dalam perancangan yang dipaparkan adalah cara kerja *device* dari sisi teknis. Tidak diperkenankan memaparkan hanya fitur-fitur dari *device* tersebut atau hanya definisi umum dari *device* tersebut.
 - 2.1.5 Teori dan Metode perancangan jaringan yang digunakan (Top-Down, NDLC, dan sebagainya)
 - 2.1.6 Teori dan Metode analisis yang digunakan untuk menganalisis hasil pengukuran
 - 2.1.7 Teori dan Metode *Fact Finding* yang digunakan
 - 2.1.8 Teori dan Metode pengukuran dan *tools* yang digunakan
- 2.2 Teori yang terkait tema penelitian (tematik)
- 2.3 Teori dan Metode evaluasi yang digunakan
- 2.4 Studi hasil penelitian yang berkaitan atau analisa perbandingan fitur pada produk sejenis yang telah dikembangkan sebelumnya (Untuk Skripsi penelitian harus kedua pilihan tersebut diambil semua)

BAB 3 METODE PENELITIAN

- 3.1 Kerangka Berpikir
- 3.2 Analisis Masalah
 - 3.1.1 Deskripsi singkat mengenai tempat penelitian
 - 3.1.2 Analisis kebutuhan *user* yang didapatkan dari *Fact Finding*
 - 3.1.3 Topologi saat ini yang dilakukan. Lengkap dengan IP yang digunakan serta paparkan analisisnya
 - 3.1.4 Observasi yang dilakukan termasuk pengukuran. Paparkan analisisnya
 - 3.1.5 Identifikasi Masalah dari analisis poin 3.2.2, 3.2.3, 3.2.4
 - 3.1.6 Usulan Pemecahan Masalah (Narasi, *Flowchart*, dan sebagainya)
- 3.3 Perancangan
 - 3.3.1 Rancangan topologi jaringan beserta pemaparan perubahan yang dilakukan
 - 3.3.2 Rancangan distribusi IP number yang digunakan. Distribusi harus sesuai dengan kebutuhan yang diminta
 - 3.3.3 Rancangan yang berkaitan dengan topik skripsi

BAB 4 HASIL DAN PEMBAHASAN

- 4.1 Spesifikasi *device* yang digunakan
- 4.2 Konfigurasi *device* yang digunakan sesuai dengan tema Skripsi. Pendekatan dengan menggunakan script konfigurasi lebih ditrekendasikan. Berikan narasi analisis pada bagian-bagian konfigurasi yang berkaitan dengan perancangan.
- 4.3 Simulasi harus memaparkan bagaimana skenario yang akan digunakan dan harus merepresentasikan kondisi nyata di lapangan dengan menggunakan data yang didapatkan di lapangan. Gunakan parameter-parameter yang telah ditetapkan dan disepakati sebelumnya sebagai acuan pengukuran.
- 4.4 Hasil implementasi dan pengukuran pada rancangan yang telah dibuat. Gunakan parameter-parameter yang telah ditetapkan dan disepakati sebelumnya sebagai acuan pengukuran.

- 4.5 Analisis perbandingan antara rancangan yang dibuat dengan system sebelumnya sesuai dengan tema yang diambil berdasarkan data yang didapat pada poin 3.2, 4.3, dan 4.4.
- 4.6 Analisis evaluasi terhadap rancangan yang dibuat dari sisi kebutuhan pemakai.

BAB 5 SIMPULAN DAN SARAN

5.1 Simpulan

Simpulan yang ditulis harus berdasarkan hasil evaluasi bab 4 dan tunjukkan parameter apa yang menjadi tolak ukur dalam rancangan yang dibuat. Tunjukkan apakah ada perbaikan pada rancangan yang dibuat dengan sistem yang sedang berjalan. Tidak boleh membuat kesimpulan hanya berisi sistem yang telah berjalan tanpa memberikan bukti data yang kuat.

5.2 Saran

Daftar Isi Skripsi Topik Jaringan

Topik Pengembangan Aplikasi Berbasiskan Jaringan

BAB 1 PENDAHULUAN

- 1.1 Latar Belakang
- 1.2 Rumusan Masalah
- 1.3 Hipotesis (Skripsi penelitian)
- 1.4 Ruang Lingkup
- 1.5 Tujuan dan Manfaat
- 1.6 Metode Penelitian
Jelaskan secara singkat. Teori dari metodenya dipaparkan di bab 2 dan penerapan dari metode penelitiannya dibahas mendetail di bab 3.
- 1.7 Sistematika Penulisan

BAB 2 TINJAUAN REFERENSI

- 2.1 Teori yang berkaitan dengan *Software Engineering*
- 2.2 Teori yang berkaitan dengan *Network Programming* (tematik)
- 2.3 Teori yang terkait tema penelitian (tematik)
- 2.4 Hasil Penelitian atau Produk Sebelumnya

BAB 3 METODE PENELITIAN

- 3.1 Kerangka Berpikir
- 3.2 Analisis
 - 3.2.1 Analisis sistem yang berjalan
 - 3.2.2 Analisis Permasalahan/Kebutuhan
 - 3.2.3 Usulan Pemecahan Masalah (Narasi, *Flowchart*)
- 3.3 Perancangan
 - 3.3.1 *Software Design Document*
 - a. Deskripsi *Software*
 - b. Fungsi-Fungsi *software*
 - Algoritma yang dipakai dan dirancang proses (contoh *Flowchart*)
 - c. Kebutuhan Teknologi
 - *Database: MySQL, Microsoft SQL Server*, dan sebagainya
 - *Programming Language: Java, PHP*, dan sebagainya
 - 3.3.2 Perancangan Sistem
 - Perancangan UML Diagram
 - *Use Case Diagram*
 - *Use Case Description*
 - *Activity/Sequence Diagram* (cukup pilih salah satu)
 - *Classm Diagram*
 - Perancangan Arsitektur Jaringan

BAB 4 HASIL DAN PEMBAHASAN

- 4.1 Spesifikasi *System*
- 4.2 Prosedur Penggunaan Aplikasi
- 4.3 Evaluasi
 - 4.3.1 Evaluasi *User Interface* (contoh: lima faktor manusia terukur)
 - 4.3.2 *User Acceptance Test* (optional untuk *e-Application*)

BAB 5 SIMPULAN DAN SARAN

- 5.1 Simpulan
Simpulan yang ditulis harus berdasarkan hasil evaluasi bab 4 dan tunjukkan parameter apa yang menjadi tolak ukur dalam rancangan yang dibuat. Tunjukkan apakah ada perbaikan pada rancangan yang dibuat dengan sistem yang sedang berjalan. Tidak boleh membuat kesimpulan hanya berisi sistem yang telah berjalan tanpa memberikan bukti data yang kuat.
- 5.2 Saran

Lampiran 9

Contoh Kutipan

- **Kutipan Langsung**

Argenti yang diterjemahkan oleh Idris (2010, p. 78) mendefinisikan identitas perusahaan sebagai berikut:

Identitas sebuah perusahaan adalah manifestasi aktual dari realitas perusahaan seperti yang disampaikan melalui nama perusahaan, logo, moto, produk, layanan, bangunan, alat-alat tulis, seragam, dan barang-barang bukti nyata yang diciptakan oleh organisasi tersebut dan dikomunikasikan kepada beragam konstituen.

- **Kutipan Tidak Langsung (Parafrase)**

Scrum adalah metode pengembangan perangkat lunak cepat yang dianut oleh Jeff Sutherland dan tim pengembangnya pada awal tahun 1990. Beberapa tahun belakangan, pengembangan menggunakan metode Scrum dilakukan oleh Schwaber dan Beedle (Pressman, 2010, p. 82).

Karray et al. (2008, p. 138) mendefinisikan interaksi manusia dan komputer sebagai sebuah desain yang harus dihasilkan sesuai pengguna, mesin dan layanan yang dibutuhkan untuk mencapai suatu kinerja tertentu baik dalam kualitas dan optimalitas layanan.

Catatan penggunaan et al. hanya dibenarkan kalau acuan tersebut ditulis oleh lebih dari 5 (lima) pengarang.

Lampiran 10

Riwayat Hidup/Curriculum Vitae



PERSONAL INFORMATION

Binusian ID	YYYYYYYYYY
Full Name	XXXXXXXXXXXXXX
E-Mail	XXXXXXXXXXXXXX
Address	<p>Current</p> <p>XX</p> <p>XX</p> <p>XX</p> <p>Permanent</p> <p>XX</p> <p>XX</p> <p>XX</p>
Phone Numbers	<p>Home : yyyyyyyyyyy</p> <p>Mobile: yyyyyyyyyyy</p>
Gender	XXXXXXXXXX
Birth Place / Date	XXXXXXXXXX / XXXXXXXXXXXX
Nationality	XXXXXXXXXX
Marital Status	XXXXXXXXXX
Religion	XXXXXXXXXX

FORMAL EDUCATION

xxxxx yyyy – xxxxx yyyy

XXXXXXXXXXXXXXXXXXXXXXXXXXXXXXXXXXXX

XXXXXXXXXXXXXXXXXXXXXXXXXXXXXXXXXXXX

XXXXXXXXXXXXXXXXXXXXXXXXXXXXXXXXXXXX

GPA : xxxx

INFORMAL EDUCATION

xxxxx yyyy – xxxxx yyyy

XXXXXXXXXXXXXXXXXXXXXXXXXXXXXXXXXXXX

XXXXXXXXXXXXXXXXXXXXXXXXXXXXXXXXXXXX

XXXXXXXXXXXXXXXXXXXX

PERSONAL CERTIFICATION

xxxxx yyyy

XXXXXXXXXXXXXXXXXXXXXXXXXXXXXXXXXXXX

ORGANIZATION EXPERIENCE

xxxxx yyyy – xxxxx yyyy

XXXXXXXXXXXXXXXXXXXXXXXXXXXXXXXXXXXX

WORKING EXPERIENCE

xxxxxx yyyy – Present

XXXXXXXXXXXXXXXXXXXXXXXXXXXXXXXXXXXX

XXXXXXXXXXXXXXXXXXXXXXXXXXXXXXXXXXXX

XXXXXXXXXXXXXXXXXXXXXXXXXXXXXXXXXXXX

Job Description:

XXXXXXXXXXXXXXXXXXXXXXXXXXXXXXXXXXXX

Malang, 23 November 2021

Prepared by,

Dian Octavia Anggraini. S.T.
Student & Lecturer Services Manager

Acknowledged by,

Choirul Huda, S.Kom., MM.
Head of Computer Science Study Program

Approved by,

Fredy Purnomo, S.Kom., M.Kom.
Dean School of Computer Science

Cuk Tho, S. Kom., M.M., M.Com (IS)
Deputy Campus Director – Academic Operations & Resources

Dr. Robertus Tang Herman, S.E., M.M.
Campus Director BINUS University @Malang